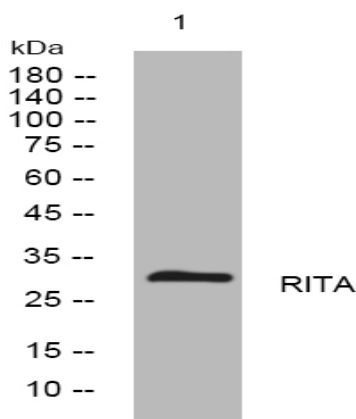


## RITA rabbit pAb

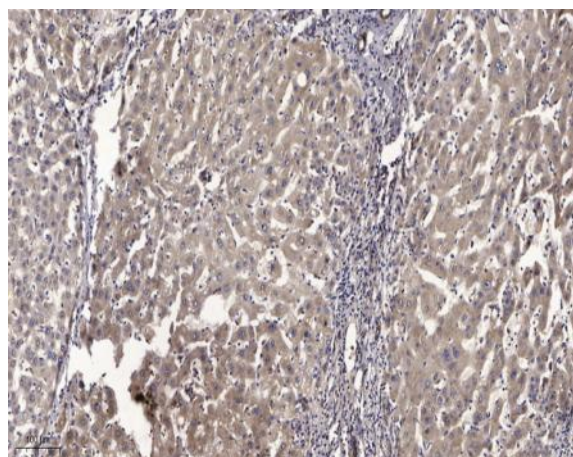
<b>Catalog No :</b>	YT6757
<b>Reactivity :</b>	Human;Mouse;Rat
<b>Applications :</b>	WB;IHC
<b>Target :</b>	RITA
<b>Gene Name :</b>	RITA C12orf52 PSEC0043
<b>Protein Name :</b>	RITA
<b>Human Gene Id :</b>	84934
<b>Human Swiss Prot No :</b>	Q96K30
<b>Mouse Gene Id :</b>	100764
<b>Mouse Swiss Prot No :</b>	Q9D1H0
<b>Rat Gene Id :</b>	288683
<b>Rat Swiss Prot No :</b>	Q2KJ10
<b>Immunogen :</b>	Synthesized peptide derived from human RITA AA range: 213-263
<b>Specificity :</b>	This antibody detects endogenous levels of RITA at Human/Mouse/Rat
<b>Formulation :</b>	Liquid in PBS containing 50% glycerol, 0.5% BSA and 0.02% sodium azide.
<b>Source :</b>	Polyclonal, Rabbit,IgG
<b>Dilution :</b>	WB 1:500-2000;IHC 1:50-300
<b>Purification :</b>	The antibody was affinity-purified from rabbit antiserum by affinity-chromatography using epitope-specific immunogen.

<b>Concentration :</b>	1 mg/ml
<b>Storage Stability :</b>	-15°C to -25°C/1 year(Do not lower than -25°C)
<b>Molecularweight :</b>	30kD
<b>Subcellular Location :</b>	Cytoplasm . Nucleus . Cytoplasm, cytoskeleton, microtubule organizing center, centrosome . Shuttles rapidly between the cytoplasm and the nucleus. The function of centrosome localization is still unclear.
<b>Sort :</b>	14534
<b>No4 :</b>	1
<b>Host :</b>	Rabbit
<b>Modifications :</b>	Unmodified

## Products Images



Western blot analysis of lysates from 293T cells, primary antibody was diluted at 1:1000, 4° over night



Immunohistochemical analysis of paraffin-embedded human liver cancer. 1, Antibody was diluted at 1:200(4° overnight). 2, Tris-EDTA,pH9.0 was used for antigen retrieval. 3,Secondary antibody was diluted at 1:200(room temperature, 45min).