

LOXL4 rabbit pAb

Catalog No :	YT6756
Reactivity :	Human;Mouse
Applications :	WB;IHC
Target :	LOXL4
Gene Name :	LOXL4 LOXC
Protein Name :	LOXL4
Human Gene Id :	84171
Human Swiss Prot No :	Q96JB6
Mouse Gene Id :	67573
Mouse Swiss Prot No :	Q924C6
Immunogen :	Synthesized peptide derived from human LOXL4 AA range: 39-89
Specificity :	This antibody detects endogenous levels of LOXL4 at Human/Mouse
Formulation :	Liquid in PBS containing 50% glycerol, 0.5% BSA and 0.02% sodium azide.
Source :	Polyclonal, Rabbit,IgG
Dilution :	WB 1:500-2000;IHC 1:50-300
Purification :	The antibody was affinity-purified from rabbit antiserum by affinity-chromatography using epitope-specific immunogen.
Concentration :	1 mg/ml
Storage Stability :	-15°C to -25°C/1 year(Do not lower than -25°C)

Molecularweight : 83kD

Background : This gene encodes a member of the lysyl oxidase gene family. The prototypic member of the family is essential to the biogenesis of connective tissue, encoding an extracellular copper-dependent amine oxidase that catalyses the first step in the formation of crosslinks in collagens and elastin. A highly conserved amino acid sequence at the C-terminus end appears to be sufficient for amine oxidase activity, suggesting that each family member may retain this function. The N-terminus is poorly conserved and may impart additional roles in developmental regulation, senescence, tumor suppression, cell growth control, and chemotaxis to each member of the family. [provided by RefSeq, Jul 2008],

Function : cofactor:Contains 1 lysine tyrosylquinone.,cofactor:Copper.,function:May modulate the formation of a collagenous extracellular matrix.,PTM:The lysine tyrosylquinone cross-link (LTQ) is generated by condensation of the epsilon-amino group of a lysine with a topaquinone produced by oxidation of tyrosine.,similarity:Belongs to the lysyl oxidase family.,similarity:Contains 4 SRCR domains.,tissue specificity:Expressed in many tissues, the highest levels among the tissues studied being in the skeletal muscle, testis and pancreas. Expressed in cartilage.,

Subcellular Location : Secreted, extracellular space .

Expression : Expressed in many tissues, the highest levels among the tissues studied being in the skeletal muscle, testis and pancreas. Expressed in cartilage.

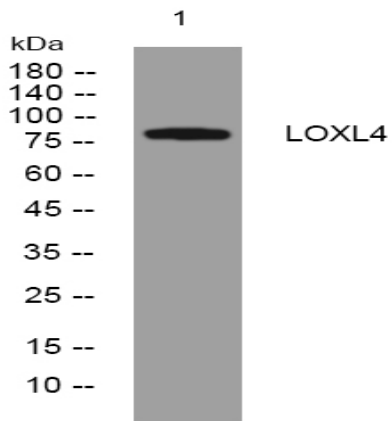
Sort : 9225

No4 : 1

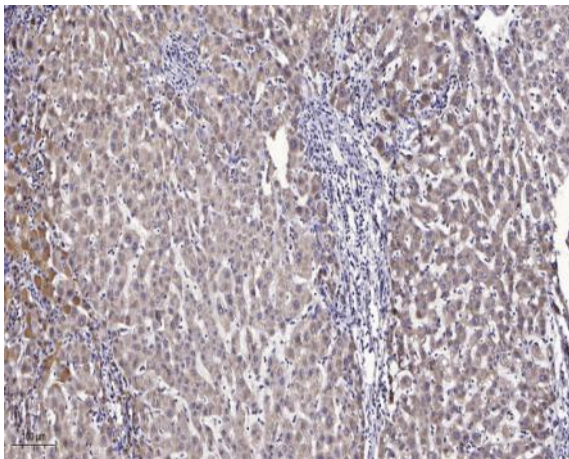
Host : Rabbit

Modifications : Unmodified

Products Images



Western blot analysis of lysates from U2OS cells, primary antibody was diluted at 1:1000, 4° over night



Immunohistochemical analysis of paraffin-embedded human liver cancer. 1, Antibody was diluted at 1:200(4° overnight). 2, Tris-EDTA,pH9.0 was used for antigen retrieval. 3,Secondary antibody was diluted at 1:200(room temperature, 45min).