

TBL3 rabbit pAb

Catalog No :	YT6754
Reactivity :	Human;Mouse;Rat
Applications :	WB
Target :	TBL3
Fields :	>>Ribosome biogenesis in eukaryotes
Gene Name :	TBL3 SAZD
Protein Name :	TBL3
Human Gene Id :	10607
Human Swiss Prot No :	Q12788
Mouse Gene Id :	213773
Mouse Swiss Prot No :	Q8C4J7
Rat Gene Id :	287120
Rat Swiss Prot No :	Q5U2W5
Immunogen :	Synthesized peptide derived from human TBL3 AA range: 486-536
Specificity :	This antibody detects endogenous levels of TBL3 at Human/Mouse/Rat
Formulation :	Liquid in PBS containing 50% glycerol, 0.5% BSA and 0.02% sodium azide.
Source :	Polyclonal, Rabbit,IgG
Dilution :	WB 1[?]500-2000
Purification :	The antibody was affinity-purified from rabbit antiserum by affinity-

chromatography using epitope-specific immunogen.

Concentration : 1 mg/ml

Storage Stability : -15°C to -25°C/1 year (Do not lower than -25°C)

Molecularweight : 89kD

Background : The protein encoded by this gene has sequence similarity with members of the WD40 repeat-containing protein family. The WD40 group is a large family of proteins, which appear to have a regulatory function. It is believed that the WD40 repeats mediate protein-protein interactions and members of the family are involved in signal transduction, RNA processing, gene regulation, vesicular trafficking, cytoskeletal assembly and may play a role in the control of cytotypic differentiation. This gene has multiple polyadenylation sites. It might have multiple alternatively spliced transcript variants but the variants have not been fully described yet. [provided by RefSeq, Jul 2008],

Function : similarity:Contains 13 WD repeats.,

Subcellular Location : Nucleus, nucleolus .

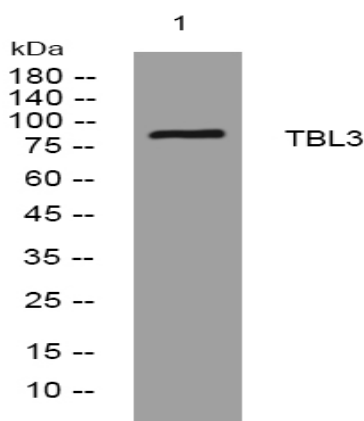
Sort : 16968

No4 : 1

Host : Rabbit

Modifications : Unmodified

Products Images



Western blot analysis of lysates from HeLa cells, primary antibody was diluted at 1:1000, 4° over night