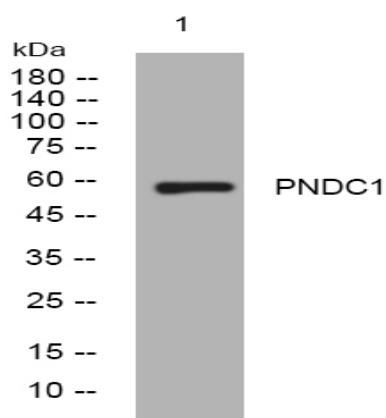


PNDC1 rabbit pAb

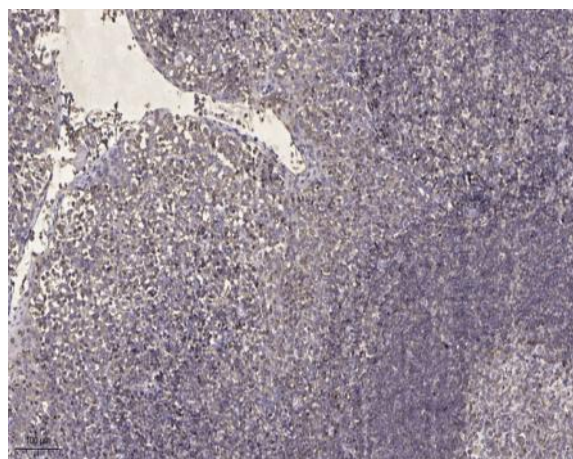
Catalog No :	YT6752
Reactivity :	Human;Mouse
Applications :	WB;IHC
Target :	PNDC1
Fields :	>>RNA degradation
Gene Name :	PNLDC1
Protein Name :	PNDC1
Human Gene Id :	154197
Human Swiss Prot No :	Q8NA58
Immunogen :	Synthesized peptide derived from human PNDC1 AA range: 410-460
Specificity :	This antibody detects endogenous levels of PNDC1 at Human
Formulation :	Liquid in PBS containing 50% glycerol, 0.5% BSA and 0.02% sodium azide.
Source :	Polyclonal, Rabbit,IgG
Dilution :	WB 1:500-2000;IHC 1:50-300
Purification :	The antibody was affinity-purified from rabbit antiserum by affinity-chromatography using epitope-specific immunogen.
Concentration :	1 mg/ml
Storage Stability :	-15°C to -25°C/1 year(Do not lower than -25°C)
Molecularweight :	57kD

Function :	<u>similarity:Belongs to the CAF1 family.,</u>
Subcellular Location :	<u>Endoplasmic reticulum membrane ; Single-pass membrane protein . Localizes mainly in the endoplasmic reticulum (PubMed:27515512). .</u>
Sort :	<u>12867</u>
No4 :	<u>1</u>
Host :	<u>Rabbit</u>
Modifications :	<u>Unmodified</u>

Products Images



Western blot analysis of lysates from SH-SY5Y cells, primary antibody was diluted at 1:1000, 4° over night



Immunohistochemical analysis of paraffin-embedded human tonsil. 1, Antibody was diluted at 1:200(4° overnight). 2, Tris-EDTA,pH9.0 was used for antigen retrieval. 3,Secondary antibody was diluted at 1:200(room temperature, 45min).