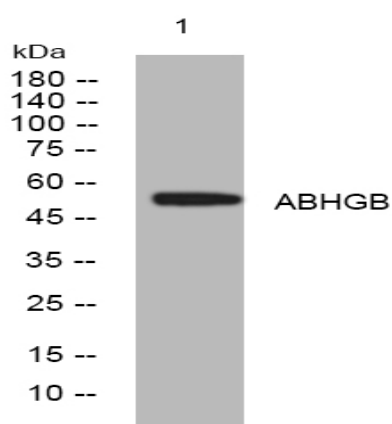


ABHGB rabbit pAb

Catalog No :	YT6751
Reactivity :	Human;Mouse;Rat
Applications :	WB
Target :	ABHGB
Gene Name :	ABHD16B C20orf135
Protein Name :	ABHGB
Human Gene Id :	140701
Human Swiss Prot No :	Q9H3Z7
Mouse Gene Id :	241850
Mouse Swiss Prot No :	Q80YU0
Rat Gene Id :	311720
Rat Swiss Prot No :	Q5XIL6
Immunogen :	Synthesized peptide derived from human ABHGB AA range: 140-190
Specificity :	This antibody detects endogenous levels of ABHGB at Human/Mouse/Rat
Formulation :	Liquid in PBS containing 50% glycerol, 0.5% BSA and 0.02% sodium azide.
Source :	Polyclonal, Rabbit,IgG
Dilution :	WB 1:500-2000
Purification :	The antibody was affinity-purified from rabbit antiserum by affinity-chromatography using epitope-specific immunogen.

Concentration :	1 mg/ml
Storage Stability :	-15°C to -25°C/1 year(Do not lower than -25°C)
Molecularweight :	52kD
Function :	similarity:Belongs to the BAT5 family.,
Sort :	1598
No4 :	1
Host :	Rabbit
Modifications :	Unmodified

Products Images



Western blot analysis of lysates from A431 cells, primary antibody was diluted at 1:1000, 4° over night