

RT4I1 rabbit pAb

Catalog No :	YT6750
Reactivity :	Human;Mouse
Applications :	WB
Target :	RT4I1
Gene Name :	RTN4IP1 NIMP
Protein Name :	RT4I1
Human Gene Id :	84816
Human Swiss Prot No :	Q8WWV3
Mouse Gene Id :	170728
Mouse Swiss Prot No :	Q924D0
Immunogen :	Synthesized peptide derived from human RT4I1 AA range: 282-332
Specificity :	This antibody detects endogenous levels of RT4I1 at Human/Mouse
Formulation :	Liquid in PBS containing 50% glycerol, 0.5% BSA and 0.02% sodium azide.
Source :	Polyclonal, Rabbit,IgG
Dilution :	WB 1:500-2000
Purification :	The antibody was affinity-purified from rabbit antiserum by affinity-chromatography using epitope-specific immunogen.
Concentration :	1 mg/ml
Storage Stability :	-15°C to -25°C/1 year(Do not lower than -25°C)

Molecularweight : 44kD

Background : This gene encodes a mitochondrial protein that interacts with reticulon 4, which is a potent inhibitor of regeneration following spinal cord injury. This interaction may be important for reticulon-induced inhibition of neurite growth. Mutations in this gene can cause optic atrophy 10, with or without ataxia, mental retardation, and seizures. There is a pseudogene for this gene on chromosome 12. Alternative splicing results in multiple transcript variants. [provided by RefSeq, Jan 2016],

Function : function:Appears to be a potent inhibitor of regeneration following spinal cord injury.,similarity:Belongs to the zinc-containing alcohol dehydrogenase family. Quinone oxidoreductase subfamily.,subunit:Interacts with RTN4, UQCRC1 and UQCRC2.,tissue specificity:Widely expressed in mitochondria-enriched tissues. Found in heart, muscle, kidney, liver, brain and placenta.,

Subcellular Location : Mitochondrion outer membrane . Colocalizes with the endoplasmic reticulum HSPA5 at spots corresponding to contacts with mitochondria. .

Expression : Widely expressed in mitochondria-enriched tissues. Found in heart, muscle, kidney, liver, brain and placenta.

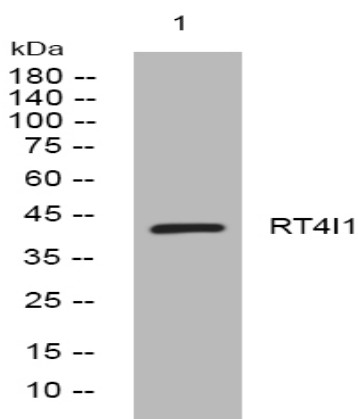
Sort : 14636

No4 : 1

Host : Rabbit

Modifications : Unmodified

Products Images



Western blot analysis of lysates from HpeG2 cells, primary antibody was diluted at 1:1000, 4° over night