

AP4E1 rabbit pAb

Catalog No :	YT6749
Reactivity :	Human;Mouse
Applications :	WB
Target :	AP4E1
Fields :	>>Lysosome
Gene Name :	AP4E1
Protein Name :	AP4E1
Human Gene Id :	23431
Human Swiss Prot No :	Q9UPM8
Mouse Gene Id :	108011
Mouse Swiss Prot No :	Q80V94
Immunogen :	Synthesized peptide derived from human AP4E1 AA range: 104-154
Specificity :	This antibody detects endogenous levels of AP4E1 at Human/Mouse
Formulation :	Liquid in PBS containing 50% glycerol, 0.5% BSA and 0.02% sodium azide.
Source :	Polyclonal, Rabbit,IgG
Dilution :	WB 1[?]500-2000
Purification :	The antibody was affinity-purified from rabbit antiserum by affinity-chromatography using epitope-specific immunogen.
Concentration :	1 mg/ml

Storage Stability : -15°C to -25°C/1 year(Do not lower than -25°C)

Molecularweight : 125kD

Background : This gene encodes a member of the adaptor complexes large subunit protein family. These proteins are components of the heterotetrameric adaptor protein complexes, which play important roles in the secretory and endocytic pathways by mediating vesicle formation and sorting of integral membrane proteins. The encoded protein is a large subunit of adaptor protein complex-4, which is associated with both clathrin- and nonclathrin-coated vesicles. Disruption of this gene may be associated with cerebral palsy. Alternatively spliced transcript variants encoding multiple isoforms have been observed for this gene. [provided by RefSeq, Nov 2011],

Function : function:Subunit of novel type of clathrin- or non-clathrin-associated protein coat involved in targeting proteins from the trans-Golgi network (TGN) to the endosomal-lysosomal system.,similarity:Belongs to the adaptor complexes large subunit family.,subcellular location:Associated with the trans-Golgi network. Found in soma and dendritic shafts of neuronal cells.,subunit:Adapter-like complex 4 (AP-4) is a heterotetramer composed of two large adaptins (epsilon-type subunit AP4E1 and beta-type subunit AP4B1), a medium adaptin (mu-type subunit AP4M1) and a small adaptin (sigma-type AP4S1).,tissue specificity:Widely expressed.,

Subcellular Location : Golgi apparatus, trans-Golgi network membrane ; Peripheral membrane protein .

Expression : Widely expressed.

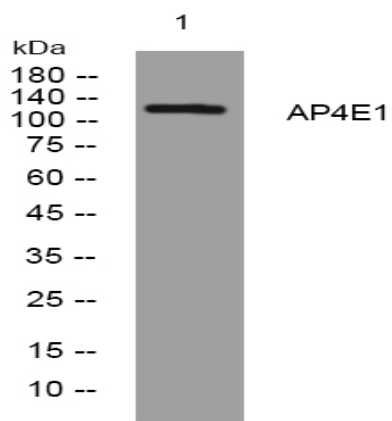
Sort : 2110

No4 : 1

Host : Rabbit

Modifications : Unmodified

Products Images



Western blot analysis of lysates from U2OS cells, primary antibody was diluted at 1:1000, 4° over night