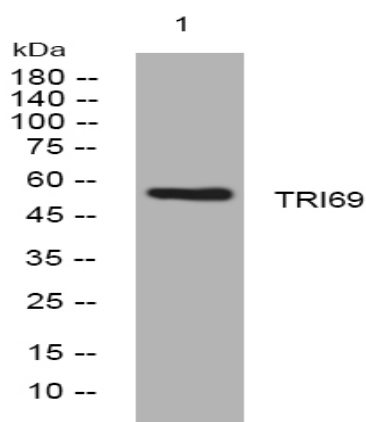


TRI69 rabbit pAb

Catalog No :	YT6746
Reactivity :	Human;Mouse;Rat
Applications :	WB
Target :	TRI69
Gene Name :	TRIM69 RNF36 HSD-34 HSD34
Protein Name :	TRI69
Human Gene Id :	140691
Human Swiss Prot No :	Q86WT6
Mouse Gene Id :	70928
Mouse Swiss Prot No :	Q80X56
Rat Gene Id :	311373
Rat Swiss Prot No :	Q5BK82
Immunogen :	Synthesized peptide derived from human TRI69 AA range: 202-252
Specificity :	This antibody detects endogenous levels of TRI69 at Human/Mouse/Rat
Formulation :	Liquid in PBS containing 50% glycerol, 0.5% BSA and 0.02% sodium azide.
Source :	Polyclonal, Rabbit,IgG
Dilution :	WB 1:500-2000
Purification :	The antibody was affinity-purified from rabbit antiserum by affinity-chromatography using epitope-specific immunogen.

Concentration :	1 mg/ml
Storage Stability :	-15°C to -25°C/1 year(Do not lower than -25°C)
Molecularweight :	55kD
Background :	This gene encodes a member of the RING-B-box-coiled-coil (RBCC) family and encodes a protein with an N-terminal RING finger motif, a PRY domain and a C-terminal SPRY domain. The mouse ortholog of this gene is specifically expressed in germ cells at the round spermatid stages during spermatogenesis and, when overexpressed, induces apoptosis. Alternatively spliced transcript variants encoding distinct isoforms have been described. [provided by RefSeq, Jul 2008],
Function :	function:May play a role in apoptosis.,PTM:Phosphorylated. Phosphorylation is necessary for nuclear localization.,similarity:Belongs to the TRIM/RBCC family.,similarity:Contains 1 B30.2/SPRY domain.,similarity:Contains 1 RING-type zinc finger.,subunit:Interacts with PML.,
Subcellular Location :	Cytoplasm . Nucleus . Nucleus speckle .
Sort :	23540
No4 :	1
Host :	Rabbit
Modifications :	Unmodified

Products Images



Western blot analysis of lysates from AD293 cells, primary antibody was diluted at 1:1000, 4° over night