

FBN3 rabbit pAb

Catalog No :	YT6743
Reactivity :	Human
Applications :	IHC;IF
Target :	FBN3
Gene Name :	FBN3 KIAA1776
Protein Name :	FBN3
Human Gene Id :	84467
Human Swiss Prot No :	Q75N90
Immunogen :	Synthesized peptide derived from human FBN3 AA range: 1311-1361
Specificity :	This antibody detects endogenous levels of FBN3 at Human
Formulation :	Liquid in PBS containing 50% glycerol, 0.5% BSA and 0.02% sodium azide.
Source :	Polyclonal, Rabbit,IgG
Dilution :	IHC 1:50-200. IF 1:50-200
Purification :	The antibody was affinity-purified from rabbit antiserum by affinity-chromatography using epitope-specific immunogen.
Concentration :	1 mg/ml
Storage Stability :	-15°C to -25°C/1 year(Do not lower than -25°C)
Molecularweight :	309kD
Background :	This gene encodes a member of the fibrillin protein family. Fibrillins are extracellular matrix molecules that assemble into microfibrils in many connective tissues. This gene is most highly expressed in fetal tissues and its protein product

is localized to extracellular microfibrils of developing skeletal elements, skin, lung, kidney, and skeletal muscle. This gene is potentially involved in Weill-Marchesani syndrome. [provided by RefSeq, Mar 2016],

Function :

function:Fibrillins are structural components of 10-12 nm extracellular calcium-binding microfibrils, which occur either in association with elastin or in elastin-free bundles. Fibrillin-containing microfibrils provide long-term force bearing structural support.,PTM:Probably forms intermolecular disulfide bonds either with other FBN3 molecules or with other components of the microfibrils.,similarity:Belongs to the fibrillin family.,similarity:Contains 44 EGF-like domains.,similarity:Contains 9 TB (TGF-beta binding) domains.,tissue specificity:Predominantly expressed in connective tissues such as skeletal muscle, tendon, skin, perichondrium and periosteum. Highly expressed in fetal lung, brain, kidney. Expressed at low level in prostate, testis, mammary gland, uterus, ovary, placenta, bladder, adrenal gland, thyroid, fetal thymus, fetal liver, liver, fetal heart and heart.,

Subcellular Location :

Secreted, extracellular space, extracellular matrix .

Expression :

Predominantly expressed in connective tissues such as skeletal muscle, tendon, skin, perichondrium and periosteum. Highly expressed in fetal lung, brain, kidney. Expressed at low level in prostate, testis, mammary gland, uterus, ovary, placenta, bladder, adrenal gland, thyroid, fetal thymus, fetal liver, liver, fetal heart and heart.

Sort :

5972

No4 :

1

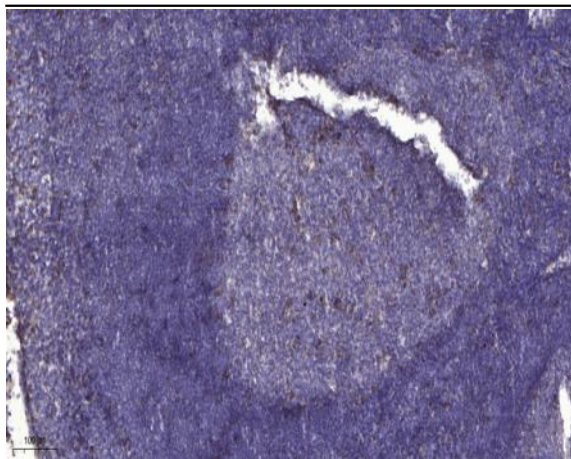
Host :

Rabbit

Modifications :

Unmodified

Products Images



Immunohistochemical analysis of paraffin-embedded human tonsil. 1, Antibody was diluted at 1:200(4° overnight). 2, Tris-EDTA,pH9.0 was used for antigen retrieval. 3,Secondary antibody was diluted at 1:200(room temperature, 30min).