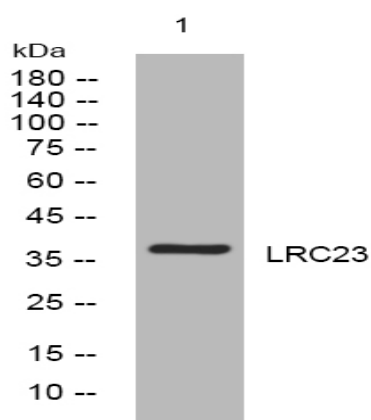


LRC23 rabbit pAb

| | |
|------------------------------|---|
| Catalog No : | YT6742 |
| Reactivity : | Human;Mouse |
| Applications : | WB |
| Target : | LRC23 |
| Gene Name : | LRRRC23 LRPB7 |
| Protein Name : | LRC23 |
| Human Gene Id : | 10233 |
| Human Swiss Prot No : | Q53EV4 |
| Mouse Gene Id : | 16977 |
| Mouse Swiss Prot No : | O35125 |
| Immunogen : | Synthesized peptide derived from human LRC23 AA range: 126-176 |
| Specificity : | This antibody detects endogenous levels of LRC23 at Human/Mouse |
| Formulation : | Liquid in PBS containing 50% glycerol, 0.5% BSA and 0.02% sodium azide. |
| Source : | Polyclonal, Rabbit,IgG |
| Dilution : | WB 1:500-2000 |
| Purification : | The antibody was affinity-purified from rabbit antiserum by affinity-chromatography using epitope-specific immunogen. |
| Concentration : | 1 mg/ml |
| Storage Stability : | -15°C to -25°C/1 year(Do not lower than -25°C) |

| | |
|--------------------------|--|
| Molecularweight : | 38kD |
| Function : | similarity:Contains 5 LRR (leucine-rich) repeats., |
| Sort : | 9239 |
| No4 : | 1 |
| Host : | Rabbit |
| Modifications : | Unmodified |

Products Images



Western blot analysis of lysates from A549 cells, primary antibody was diluted at 1:1000, 4° over night