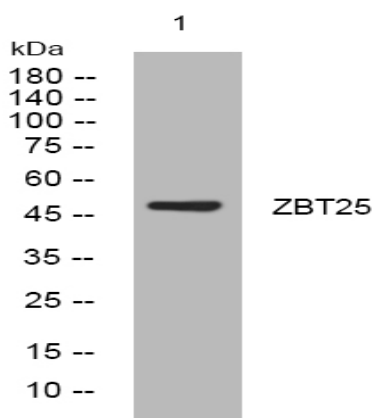


ZBT25 rabbit pAb

Catalog No :	YT6741
Reactivity :	Human
Applications :	WB
Target :	ZBT25
Gene Name :	ZBTB25 C14orf51 KUP ZNF46
Protein Name :	ZBT25
Human Gene Id :	7597
Human Swiss Prot No :	P24278
Immunogen :	Synthesized peptide derived from human ZBT25 AA range: 249-299
Specificity :	This antibody detects endogenous levels of ZBT25 at Human
Formulation :	Liquid in PBS containing 50% glycerol, 0.5% BSA and 0.02% sodium azide.
Source :	Polyclonal, Rabbit,IgG
Dilution :	WB 1:500-2000
Purification :	The antibody was affinity-purified from rabbit antiserum by affinity-chromatography using epitope-specific immunogen.
Concentration :	1 mg/ml
Storage Stability :	-15°C to -25°C/1 year(Do not lower than -25°C)
Molecularweight :	48kD
Function :	function:May be involved in transcriptional regulation.,similarity:Contains 1 BTB (POZ) domain.,similarity:Contains 2 C2H2-type zinc fingers.,tissue specificity:Expressed mainly in hematopoietic cells and testis.,

Subcellular Location :	Nucleus.
Expression :	Expressed mainly in hematopoietic cells and testis.
Sort :	24467
No4 :	1
Host :	Rabbit
Modifications :	Unmodified

Products Images



Western blot analysis of lysates from U2OS cells, primary antibody was diluted at 1:1000, 4° over night