

## TT39C rabbit pAb

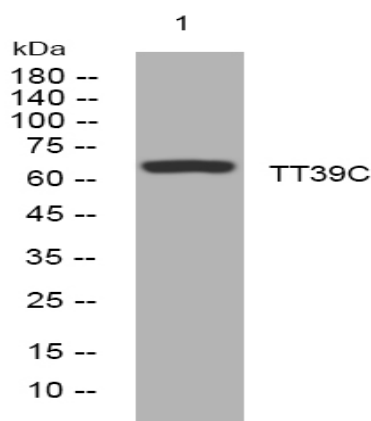
<b>Catalog No :</b>	YT6739
<b>Reactivity :</b>	Human;Mouse;Rat
<b>Applications :</b>	WB
<b>Target :</b>	TT39C
<b>Gene Name :</b>	TTC39C C18orf17
<b>Protein Name :</b>	TT39C
<b>Human Gene Id :</b>	125488
<b>Human Swiss Prot No :</b>	Q8N584
<b>Mouse Gene Id :</b>	72747
<b>Mouse Swiss Prot No :</b>	Q8VE09
<b>Rat Gene Id :</b>	686179
<b>Rat Swiss Prot No :</b>	Q0VGK2
<b>Immunogen :</b>	Synthesized peptide derived from human TT39C AA range: 229-279
<b>Specificity :</b>	This antibody detects endogenous levels of TT39C at Human/Mouse/Rat
<b>Formulation :</b>	Liquid in PBS containing 50% glycerol, 0.5% BSA and 0.02% sodium azide.
<b>Source :</b>	Polyclonal, Rabbit,IgG
<b>Dilution :</b>	WB 1:500-2000
<b>Purification :</b>	The antibody was affinity-purified from rabbit antiserum by affinity-chromatography using epitope-specific immunogen.

---

<b>Concentration :</b>	<u>1 mg/ml</u>
<b>Storage Stability :</b>	<u>-15°C to -25°C/1 year(Do not lower than -25°C)</u>
<b>Molecularweight :</b>	<u>64kD</u>
<b>Function :</b>	<u>similarity:Belongs to the TTC39 family.,similarity:Contains 3 TPR repeats.,</u>
<b>Sort :</b>	<u>23672</u>
<b>No4 :</b>	<u>1</u>
<b>Host :</b>	<u>Rabbit</u>
<b>Modifications :</b>	<u>Unmodified</u>

---

## Products Images



Western blot analysis of lysates from KB cells, primary antibody was diluted at 1:1000, 4° over night