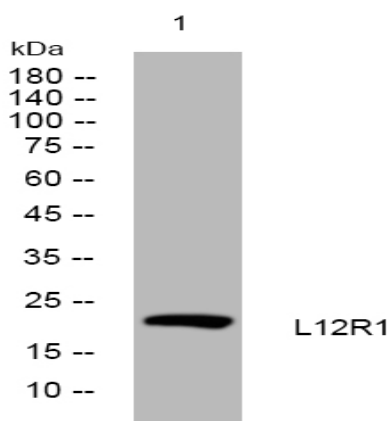


L12R1 rabbit pAb

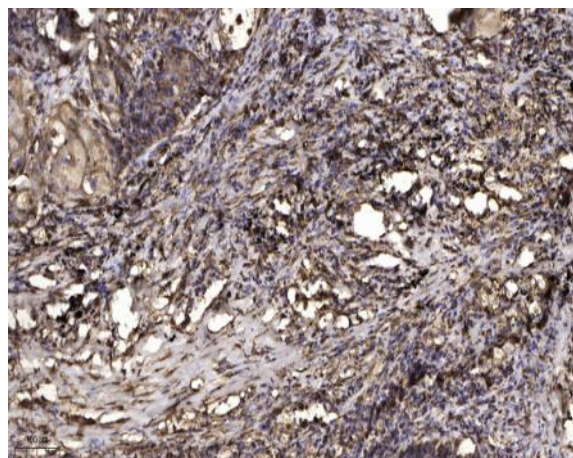
Catalog No :	YT6738
Reactivity :	Human;Mouse
Applications :	WB;IHC
Target :	L12R1
Gene Name :	LOH12CR1
Protein Name :	L12R1
Human Gene Id :	118426
Human Swiss Prot No :	Q969J3
Mouse Gene Id :	67774
Mouse Swiss Prot No :	Q9D920
Immunogen :	Synthesized peptide derived from human L12R1 AA range: 9-59
Specificity :	This antibody detects endogenous levels of L12R1 at Human/Mouse
Formulation :	Liquid in PBS containing 50% glycerol, 0.5% BSA and 0.02% sodium azide.
Source :	Polyclonal, Rabbit,IgG
Dilution :	WB 1:500-2000;IHC 1:50-300
Purification :	The antibody was affinity-purified from rabbit antiserum by affinity-chromatography using epitope-specific immunogen.
Concentration :	1 mg/ml
Storage Stability :	-15°C to -25°C/1 year(Do not lower than -25°C)

Molecularweight :	22kD
Function :	similarity:Belongs to the LOH12CR1 family.,tissue specificity:Widely expressed.,
Subcellular Location :	Lysosome membrane ; Lipid-anchor ; Cytoplasmic side .
Expression :	Ubiquitously expressed (at protein level).
Sort :	9075
No4 :	1
Host :	Rabbit
Modifications :	Unmodified

Products Images



Western blot analysis of lysates from PC-12 cells, primary antibody was diluted at 1:1000, 4° over night



Immunohistochemical analysis of paraffin-embedded human Squamous cell carcinoma of lung. 1, Antibody was diluted at 1:200(4° overnight). 2, Tris-EDTA,pH9.0 was used for antigen retrieval. 3,Secondary antibody was diluted at 1:200(room temperature, 45min).