

LIPT2 rabbit pAb

Catalog No :	YT6733
Reactivity :	Human;Mouse
Applications :	WB;IHC
Target :	LIPT2
Fields :	>>Lipoic acid metabolism;>>Metabolic pathways;>>Biosynthesis of cofactors
Gene Name :	LIPT2
Protein Name :	LIPT2
Human Gene Id :	387787
Human Swiss Prot No :	A6NK58
Mouse Gene Id :	67164
Mouse Swiss Prot No :	Q9D009
Immunogen :	Synthesized peptide derived from human LIPT2 AA range: 8-58
Specificity :	This antibody detects endogenous levels of LIPT2 at Human/Mouse
Formulation :	Liquid in PBS containing 50% glycerol, 0.5% BSA and 0.02% sodium azide.
Source :	Polyclonal, Rabbit,IgG
Dilution :	WB 1:500-2000;IHC 1:50-300
Purification :	The antibody was affinity-purified from rabbit antiserum by affinity-chromatography using epitope-specific immunogen.
Concentration :	1 mg/ml

Storage Stability : -15°C to -25°C/1 year(Do not lower than -25°C)

Molecularweight : 25kD

Background : This gene encodes a mitochondrial protein that catalyzes the transfer of octanoic acid to lipoate-dependent enzymes such as octanoyl-ACP. Alternative splicing results in multiple transcript variants. [provided by RefSeq, Aug 2016],

Function : catalytic activity:Octanoyl-[acyl-carrier-protein] + protein = protein N(6)-(octanoyl)lysine + [acyl-carrier-protein].,function:Catalyzes the transfer of endogenously produced octanoic acid from octanoyl-acyl-carrier-protein onto the lipoyl domains of lipoate-dependent enzymes. Lipoyl-ACP can also act as a substrate although octanoyl-ACP is likely to be the physiological substrate.,miscellaneous:In the reaction, the free carboxyl group of octanoic acid is attached via an amide linkage to the epsilon-amino group of a specific lysine residue of lipoyl domains of lipoate-dependent enzymes.,pathway:Protein modification; protein lipoylation via endogenous pathway; protein N(6)-(lipoyl)lysine from octanoyl-[acyl-carrier-protein]: step 1/2.,similarity:Belongs to the lipB family.,

Subcellular Location : Mitochondrion .

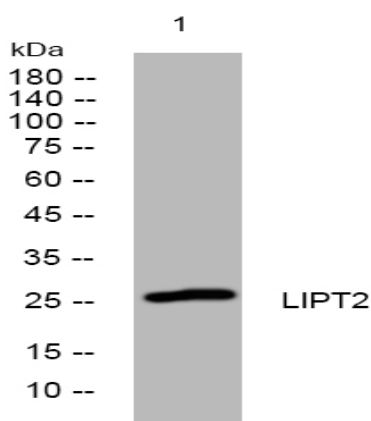
Sort : 9201

No4 : 1

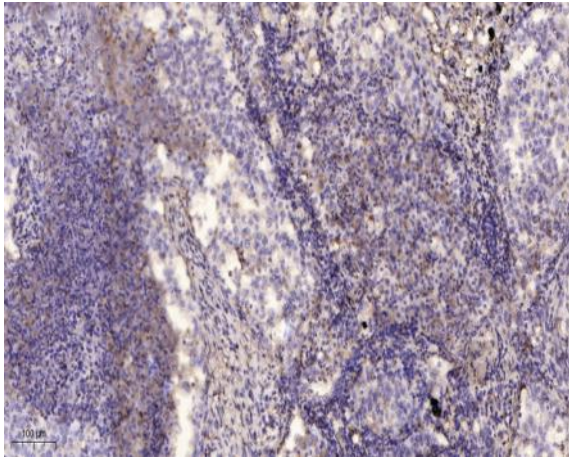
Host : Rabbit

Modifications : Unmodified

Products Images



Western blot analysis of lysates from K562 cells, primary antibody was diluted at 1:1000, 4° over night



Immunohistochemical analysis of paraffin-embedded human lung cancer. 1, Antibody was diluted at 1:200(4° overnight). 2, Tris-EDTA,pH9.0 was used for antigen retrieval. 3,Secondary antibody was diluted at 1:200(room temperature, 45min).