

FBX6 rabbit pAb

Catalog No :	YT6731
Reactivity :	Human;Mouse;Rat
Applications :	WB
Target :	FBX6
Fields :	>>Protein processing in endoplasmic reticulum
Gene Name :	FBXO6 FBG2 FBS2 FBX6
Protein Name :	FBX6
Human Gene Id :	26270
Human Swiss Prot No :	Q9NRD1
Mouse Gene Id :	50762
Mouse Swiss Prot No :	Q9QZN4
Rat Gene Id :	192351
Rat Swiss Prot No :	Q923V4
Immunogen :	Synthesized peptide derived from human FBX6 AA range: 30-80
Specificity :	This antibody detects endogenous levels of FBX6 at Human/Mouse/Rat
Formulation :	Liquid in PBS containing 50% glycerol, 0.5% BSA and 0.02% sodium azide.
Source :	Polyclonal, Rabbit,IgG
Dilution :	WB 1[?]500-2000
Purification :	The antibody was affinity-purified from rabbit antiserum by affinity-

chromatography using epitope-specific immunogen.

Concentration : 1 mg/ml

Storage Stability : -15°C to -25°C/1 year (Do not lower than -25°C)

Molecularweight : 32kD

Background : This gene encodes a member of the F-box protein family which is characterized by an approximately 40 amino acid motif, the F-box. The F-box proteins constitute one of the four subunits of the ubiquitin protein ligase complex called SCFs (SKP1-cullin-F-box), which function in phosphorylation-dependent ubiquitination. The F-box proteins are divided into 3 classes: Fbws containing WD-40 domains, Fbls containing leucine-rich repeats, and Fbxs containing either different protein-protein interaction modules or no recognizable motifs. The protein encoded by this gene belongs to the Fbxs class, and its C-terminal region is highly similar to that of rat NFB42 (neural F Box 42 kDa) which may be involved in the control of the cell cycle. [provided by RefSeq, Jul 2008],

Function : function:Probably recognizes and binds to some phosphorylated proteins and promotes their ubiquitination and degradation.,online information:hFBG2,similarity:Contains 1 F-box domain.,similarity:Contains 1 FBA (F-box associated) domain.,subunit:Part of a SCF (SKP1-cullin-F-box) protein ligase complex.,

Subcellular Location : Cytoplasm .

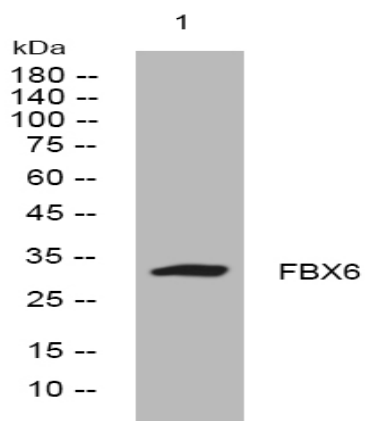
Sort : 5982

No4 : 1

Host : Rabbit

Modifications : Unmodified

Products Images



Western blot analysis of lysates from VEC cells, primary antibody was diluted at 1:1000, 4° over night