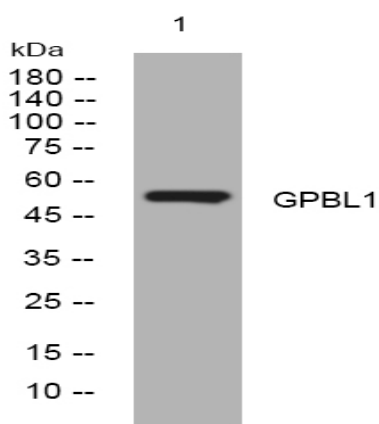


GPBL1 rabbit pAb

Catalog No :	YT6724
Reactivity :	Human;Mouse;Rat
Applications :	WB
Target :	GPBL1
Gene Name :	GPBP1L1 SP192
Protein Name :	GPBL1
Human Gene Id :	60313
Human Swiss Prot No :	Q9HC44
Mouse Gene Id :	77110
Mouse Swiss Prot No :	Q6NZP2
Rat Gene Id :	313519
Rat Swiss Prot No :	Q3KR53
Immunogen :	Synthesized peptide derived from human GPBL1 AA range: 170-220
Specificity :	This antibody detects endogenous levels of GPBL1 at Human/Mouse/Rat
Formulation :	Liquid in PBS containing 50% glycerol, 0.5% BSA and 0.02% sodium azide.
Source :	Polyclonal, Rabbit,IgG
Dilution :	WB 1:500-2000
Purification :	The antibody was affinity-purified from rabbit antiserum by affinity-chromatography using epitope-specific immunogen.

Concentration :	1 mg/ml
Storage Stability :	-15°C to -25°C/1 year(Do not lower than -25°C)
Molecularweight :	52kD
Function :	function:Possible transcription factor.,similarity:Belongs to the vasculin family.,
Subcellular Location :	Nucleus .
Sort :	6970
No4 :	1
Host :	Rabbit
Modifications :	Unmodified

Products Images



Western blot analysis of lysates from KB cells, primary antibody was diluted at 1:1000, 4° over night