

CASC3 rabbit pAb

Catalog No :	YT6721
Reactivity :	Human;Mouse;Rat
Applications :	WB
Target :	CASC3
Fields :	>>Nucleocytoplasmic transport;>>mRNA surveillance pathway
Gene Name :	CASC3 MLN51
Protein Name :	CASC3
Human Gene Id :	22794
Human Swiss Prot No :	O15234
Mouse Gene Id :	192160
Mouse Swiss Prot No :	Q8K3W3
Rat Gene Id :	259170
Rat Swiss Prot No :	Q8K3X0
Immunogen :	Synthesized peptide derived from human CASC3 AA range: 434-484
Specificity :	This antibody detects endogenous levels of CASC3 at Human/Mouse/Rat
Formulation :	Liquid in PBS containing 50% glycerol, 0.5% BSA and 0.02% sodium azide.
Source :	Polyclonal, Rabbit,IgG
Dilution :	WB 1[?]500-2000
Purification :	The antibody was affinity-purified from rabbit antiserum by affinity-

chromatography using epitope-specific immunogen.

Concentration : 1 mg/ml

Storage Stability : -15°C to -25°C/1 year(Do not lower than -25°C)

Molecularweight : 77kD

Background : The product of this gene is a core component of the exon junction complex (EJC), a protein complex that is deposited on spliced mRNAs at exon-exon junctions and functions in nonsense-mediated mRNA decay (NMD). The encoded protein binds RNA and interacts with two other EJC core components. It is predominantly located in the cytoplasm, but shuttles into the nucleus where it localizes to nuclear speckles. [provided by RefSeq, Jul 2008],

Function : domain:The coiled coil domain may be involved in oligomerization.,function:Component of the dendritic ribonucleoprotein particles (RNPs) in hippocampal neurons. May play a role in mRNA transport.,PTM:Phosphorylated.,subcellular location:Predominantly found in the perinuclear region (By similarity). Shuttles between the nucleus and the cytoplasm in a CRM1-dependent manner.,subunit:Interacts with STAU in an RNA-dependent manner (By similarity). Forms homo-oligomers.,tissue specificity:Widely expressed. Overexpressed in breast cancers and metastasis, as well as in gastric cancers.,

Subcellular Location : Cytoplasm . Cytoplasm, perinuclear region . Nucleus . Nucleus speckle . Cytoplasm, Stress granule . Cytoplasm, Cytoplasmic ribonucleoprotein granule . Cell projection, dendrite . Shuttles between the nucleus and the cytoplasm in a XPO1/CRM1-dependent manner. Transported to the cytoplasm as part of the exon junction complex (EJC) bound to mRNA (PubMed:15166247). In nuclear speckles, colocalizes with MAGOH. Under stress conditions, colocalizes with FMR1 and TIA1, but not MAGOH and RBM8A EJC core factors, in cytoplasmic stress granules (PubMed:17652158). In the dendrites of hippocampal neurons, localizes to dendritic ribonucleoprotein granules (By similarity). .

Expression : Widely expressed. Overexpressed in breast cancers and metastasis, as well as in gastric cancers.

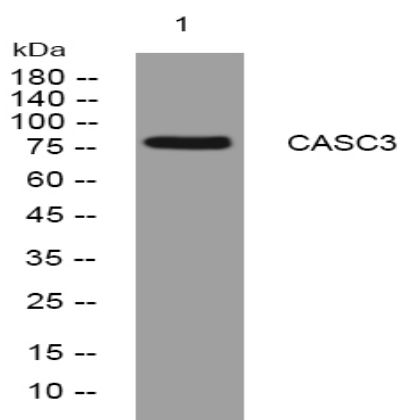
Sort : 3128

No4 : 1

Host : Rabbit

Modifications : Unmodified

Products Images



Western blot analysis of lysates from KB cells, primary antibody was diluted at 1:1000, 4 ° over night