

## SDC3 rabbit pAb

<b>Catalog No :</b>	YT6720
<b>Reactivity :</b>	Human;Mouse;Rat
<b>Applications :</b>	WB;IHC
<b>Target :</b>	SDC3
<b>Fields :</b>	>>Cell adhesion molecules
<b>Gene Name :</b>	SDC3 KIAA0468
<b>Protein Name :</b>	SDC3
<b>Human Gene Id :</b>	9672
<b>Human Swiss Prot No :</b>	O75056
<b>Mouse Gene Id :</b>	20970
<b>Mouse Swiss Prot No :</b>	Q64519
<b>Rat Gene Id :</b>	116673
<b>Rat Swiss Prot No :</b>	P33671
<b>Immunogen :</b>	Synthesized peptide derived from human SDC3 AA range: 131-181
<b>Specificity :</b>	This antibody detects endogenous levels of SDC3 at Human/Mouse/Rat
<b>Formulation :</b>	Liquid in PBS containing 50% glycerol, 0.5% BSA and 0.02% sodium azide.
<b>Source :</b>	Polyclonal, Rabbit,IgG
<b>Dilution :</b>	WB 1:500-2000;IHC 1:50-300
<b>Purification :</b>	The antibody was affinity-purified from rabbit antiserum by affinity-

---

chromatography using epitope-specific immunogen.

---

**Concentration :** 1 mg/ml

---

**Storage Stability :** -15°C to -25°C/1 year(Do not lower than -25°C)

---

**Molecularweight :** 49kD

---

**Background :** The protein encoded by this gene belongs to the syndecan proteoglycan family. It may play a role in the organization of cell shape by affecting the actin cytoskeleton, possibly by transferring signals from the cell surface in a sugar-dependent mechanism. Allelic variants of this gene have been associated with obesity. [provided by RefSeq, Oct 2009],

---

**Function :** function:Cell surface proteoglycan that may bear heparan sulfate (By similarity). May have a role in the organization of cell shape by affecting the actin cytoskeleton, possibly by transferring signals from the cell surface in a sugar-dependent mechanism.,PTM:O-glycosylated within the Thr/Ser-rich region which could interact with lectin domains on other molecules.,similarity:Belongs to the syndecan proteoglycan family.,tissue specificity:Expressed in the nervous system, the adrenal gland, and the spleen.,

---

**Subcellular Location :** Cell membrane; Single-pass type I membrane protein.

---

**Expression :** Expressed in the nervous system, the adrenal gland, and the spleen.

---

**Sort :** 16190

---

**No4 :** 1

---

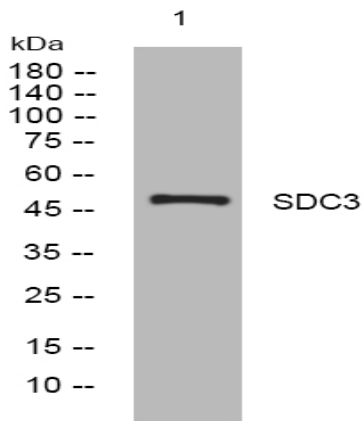
**Host :** Rabbit

---

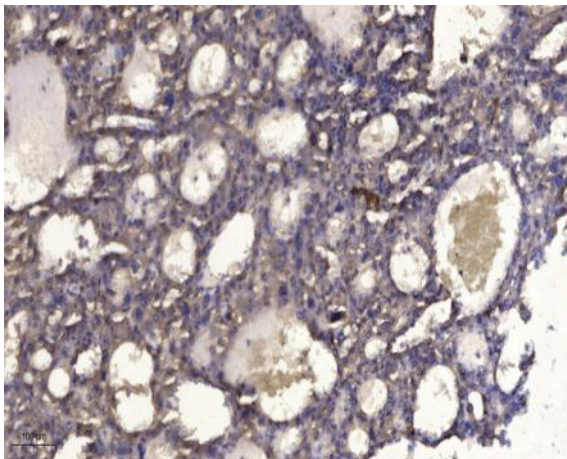
**Modifications :** Unmodified

---

## Products Images



Western blot analysis of lysates from HpeG2 cells, primary antibody was diluted at 1:1000, 4° over night



Immunohistochemical analysis of paraffin-embedded human liver cancer. 1, Antibody was diluted at 1:200(4° overnight). 2, Tris-EDTA,pH9.0 was used for antigen retrieval. 3,Secondary antibody was diluted at 1:200(room temperature, 45min).