

DPPA2 rabbit pAb

Catalog No :	YT6718
Reactivity :	Human;Mouse
Applications :	WB
Target :	DPPA2
Gene Name :	DPPA2 PESCRG1
Protein Name :	DPPA2
Human Gene Id :	151871
Human Swiss Prot No :	Q7Z7J5
Mouse Gene Id :	73703
Mouse Swiss Prot No :	Q9CWH0
Immunogen :	Synthesized peptide derived from human DPPA2 AA range: 138-188
Specificity :	This antibody detects endogenous levels of DPPA2 at Human/Mouse
Formulation :	Liquid in PBS containing 50% glycerol, 0.5% BSA and 0.02% sodium azide.
Source :	Polyclonal, Rabbit,IgG
Dilution :	WB 1:500-2000
Purification :	The antibody was affinity-purified from rabbit antiserum by affinity-chromatography using epitope-specific immunogen.
Concentration :	1 mg/ml
Storage Stability :	-15°C to -25°C/1 year(Do not lower than -25°C)

Molecularweight : 33kD

Function : function:May play a role in maintaining cell pluripotentiality.,similarity:Contains 1 SAP domain.,tissue specificity:Expressed in embryonic stem cells. No expression is seen in 5 months embryo, mesenchymal stem cells, embryonic fibrocytes and adult tissues.,

Subcellular Location : Nucleus .

Expression : Expressed in embryonic stem cells. No expression is seen in 5 months embryo, mesenchymal stem cells, embryonic fibrocytes and adult tissues.

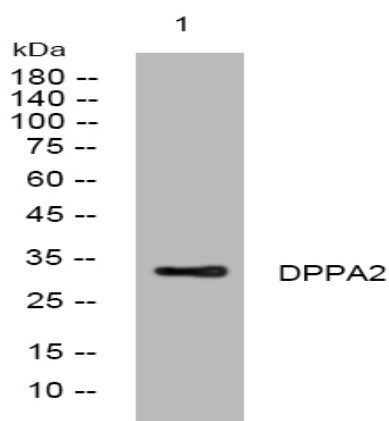
Sort : 5244

No4 : 1

Host : Rabbit

Modifications : Unmodified

Products Images



Western blot analysis of lysates from KB cells, primary antibody was diluted at 1:1000, 4° over night