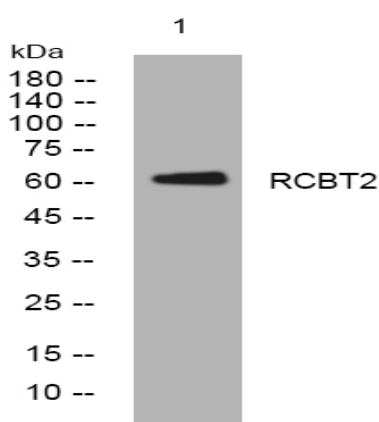


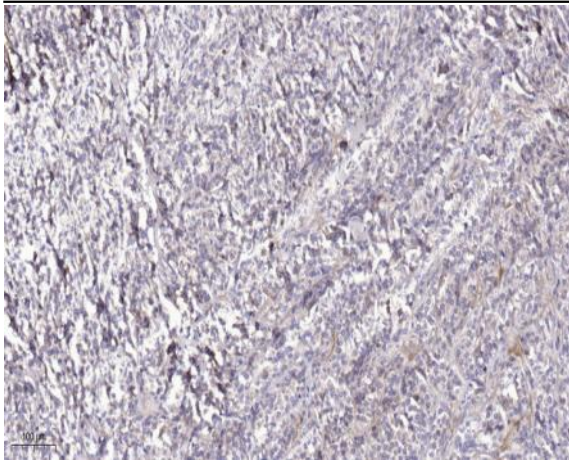
RCBT2 rabbit pAb

Catalog No :	YT6715
Reactivity :	Human;Mouse;Rat
Applications :	WB;ELISA;IHC
Target :	RCBT2
Gene Name :	RCBTB2 CHC1L RLG
Protein Name :	RCBT2
Human Gene Id :	1102
Human Swiss Prot No :	O95199
Mouse Gene Id :	105670
Mouse Swiss Prot No :	Q99LJ7
Rat Gene Id :	290363
Rat Swiss Prot No :	Q6P798
Immunogen :	Synthesized peptide derived from human RCBT2 AA range: 53-103
Specificity :	This antibody detects endogenous levels of RCBT2 at Human/Mouse/Rat
Formulation :	Liquid in PBS containing 50% glycerol, 0.5% BSA and 0.02% sodium azide.
Source :	Polyclonal, Rabbit,IgG
Dilution :	WB 1:500-2000;IHC 1:50-300; ELISA 2000-20000
Purification :	The antibody was affinity-purified from rabbit antiserum by affinity-chromatography using epitope-specific immunogen.

Concentration :	1 mg/ml
Storage Stability :	-15°C to -25°C/1 year(Do not lower than -25°C)
Molecularweight :	61kD
Background :	This gene encodes a protein containing two C-terminal BTB/POZ domains that is related to regulator of chromosome condensation (RCC). The encoded protein may act as a guanine nucleotide exchange factor. This gene is observed to be lost or underexpressed in prostate cancers. There is a pseudogene of this gene on chromosome 10. Alternative splicing results in multiple transcript variants. [provided by RefSeq, Nov 2013],
Function :	similarity:Contains 1 BTB (POZ) domain.,similarity:Contains 2 BTB (POZ) domains.,similarity:Contains 6 RCC1 repeats.,
Subcellular Location :	Cytoplasmic vesicle, secretory vesicle, acrosome . Mainly found in the acrosomal cap region. .
Sort :	14060
No4 :	1
Host :	Rabbit
Modifications :	Unmodified

Products Images





Immunohistochemical analysis of paraffin-embedded human Colon cancer. 1, Antibody was diluted at 1:200(4° overnight). 2, Tris-EDTA,pH9.0 was used for antigen retrieval. 3,Secondary antibody was diluted at 1:200(room temperature, 45min).