

SG1D4 rabbit pAb

Catalog No :	YT6714
Reactivity :	Human
Applications :	IHC;IF
Target :	SG1D4
Gene Name :	SCGB1D4 UNQ517/PRO812
Protein Name :	SG1D4
Human Gene Id :	404552
Human Swiss Prot No :	Q6XE38
Immunogen :	Synthesized peptide derived from human SG1D4 AA range: 28-78
Specificity :	This antibody detects endogenous levels of SG1D4 at Human
Formulation :	Liquid in PBS containing 50% glycerol, 0.5% BSA and 0.02% sodium azide.
Source :	Polyclonal, Rabbit,IgG
Dilution :	IHC 1:50-200. IF 1:50-200
Purification :	The antibody was affinity-purified from rabbit antiserum by affinity-chromatography using epitope-specific immunogen.
Concentration :	1 mg/ml
Storage Stability :	-15°C to -25°C/1 year(Do not lower than -25°C)
Molecularweight :	9kD
Function :	function:Seems to be involved in the regulation of chemotactic cell migration and invasion.,induction:By interferon gamma.,similarity:Belongs to the secretoglobin family. Lipophilin subfamily.,tissue specificity:Expressed in all tissues; the highest

level of expression is detectable in lymph nodes, tonsil, cultured lymphoblasts and ovary.,

Subcellular

Secreted.

Location :**Expression :**

Expressed in all tissues; the highest level of expression is detectable in lymph nodes, tonsil, cultured lymphoblasts and ovary.

Sort :

16267

No4 :

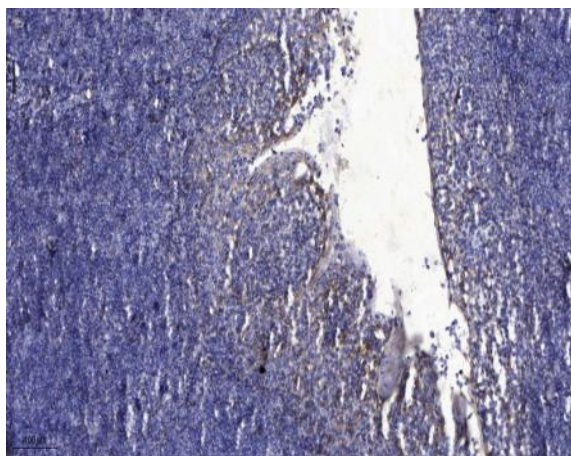
1

Host :

Rabbit

Modifications :Unmodified

Products Images



Immunohistochemical analysis of paraffin-embedded human tonsil. 1, Antibody was diluted at 1:200(4° overnight). 2, Tris-EDTA,pH9.0 was used for antigen retrieval. 3,Secondary antibody was diluted at 1:200(room temperature, 30min).