

SNF8 rabbit pAb

Catalog No :	YT6711
Reactivity :	Human;Mouse;Rat
Applications :	WB;IHC
Target :	SNF8
Fields :	>>Endocytosis
Gene Name :	SNF8 EAP30
Protein Name :	SNF8
Human Gene Id :	11267
Human Swiss Prot No :	Q96H20
Mouse Gene Id :	27681
Mouse Swiss Prot No :	Q9CZ28
Rat Gene Id :	287645
Rat Swiss Prot No :	Q5RK19
Immunogen :	Synthesized peptide derived from human SNF8 AA range: 78-128
Specificity :	This antibody detects endogenous levels of SNF8 at Human/Mouse/Rat
Formulation :	Liquid in PBS containing 50% glycerol, 0.5% BSA and 0.02% sodium azide.
Source :	Polyclonal, Rabbit,IgG
Dilution :	WB 1:500-2000;IHC 1:50-300
Purification :	The antibody was affinity-purified from rabbit antiserum by affinity-

chromatography using epitope-specific immunogen.

Concentration : 1 mg/ml

Storage Stability : -15°C to -25°C/1 year (Do not lower than -25°C)

Molecularweight : 28kD

Background : The protein encoded by this gene is a component of the endosomal sorting complex required for transport II (ESCRT-II), which regulates the movement of ubiquitinated transmembrane proteins to the lysosome for degradation. This complex also interacts with the RNA polymerase II elongation factor (ELL) to overcome the repressive effects of ELL on RNA polymerase II activity. Several transcript variants encoding different isoforms have been found for this gene. [provided by RefSeq, Nov 2015],

Function : function:Component of the ESCRT-II complex, which is required for multivesicular bodies (MVBs) formation and sorting of endosomal cargo proteins into MVBs. The MVB pathway mediates delivery of transmembrane proteins into the lumen of the lysosome for degradation. The ESCRT-II complex is probably involved in the recruitment of the ESCRT-III complex. The ESCRT-II complex may also play a role in transcription regulation by participating in derepression of transcription by RNA polymerase II, possibly via its interaction with ELL.,similarity:Belongs to the SNF8 family.,subunit:Component of a complex at least composed of ELL, SNF8/EAP30, VPS25/EAP20 and VPS36/EAP45 (By similarity). Component of the endosomal sorting required for transport complex II (ESCRT-II), composed of SNF8, VPS25 and VPS36. Interacts with TSG101, VPS25 and VPS36.,

Subcellular Location : Cytoplasm. Endosome membrane. Nucleus . Late endosome membrane. Recruited to the endosome membrane to participate in vesicle formation.

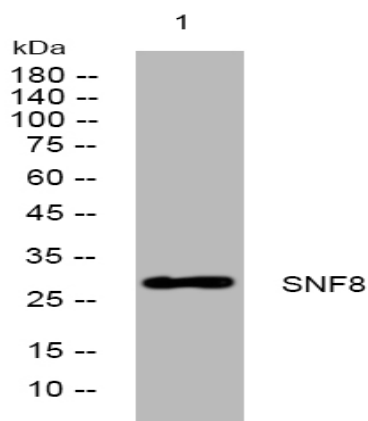
Sort : 16470

No4 : 1

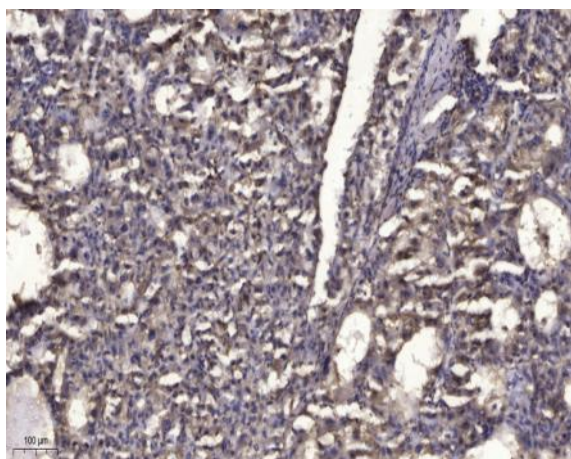
Host : Rabbit

Modifications : Unmodified

Products Images



Western blot analysis of lysates from HpeG2 cells, primary antibody was diluted at 1:1000, 4° over night



Immunohistochemical analysis of paraffin-embedded human liver cancer. 1, Antibody was diluted at 1:200(4° overnight). 2, Tris-EDTA,pH9.0 was used for antigen retrieval. 3,Secondary antibody was diluted at 1:200(room temperature, 45min).