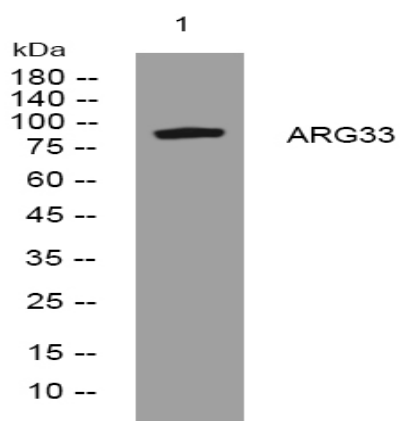


ARG33 rabbit pAb

Catalog No :	YT6709
Reactivity :	Human;Mouse
Applications :	WB
Target :	ARG33
Gene Name :	ARHGEF33
Protein Name :	ARG33
Human Swiss Prot No :	A8MVX0
Mouse Gene Id :	381112
Mouse Swiss Prot No :	Q8BW86
Immunogen :	Synthesized peptide derived from human ARG33 AA range: 499-549
Specificity :	This antibody detects endogenous levels of ARG33 at Human/Mouse
Formulation :	Liquid in PBS containing 50% glycerol, 0.5% BSA and 0.02% sodium azide.
Source :	Polyclonal, Rabbit,IgG
Dilution :	WB 1:500-2000
Purification :	The antibody was affinity-purified from rabbit antiserum by affinity-chromatography using epitope-specific immunogen.
Concentration :	1 mg/ml
Storage Stability :	-15°C to -25°C/1 year(Do not lower than -25°C)
Molecularweight :	93kD

Sort :	<u>2222</u>
No4 :	<u>1</u>
Host :	<u>Rabbit</u>
Modifications :	<u>Unmodified</u>

Products Images



Western blot analysis of lysates from AD293 cells, primary antibody was diluted at 1:1000, 4° over night