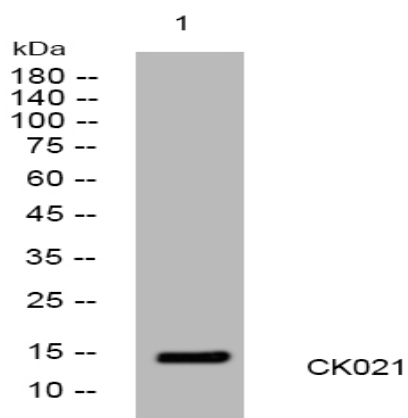


## CK021 rabbit pAb

<b>Catalog No :</b>	YT6700
<b>Reactivity :</b>	Human
<b>Applications :</b>	WB
<b>Target :</b>	CK021
<b>Gene Name :</b>	C11orf21
<b>Protein Name :</b>	CK021
<b>Human Gene Id :</b>	29125
<b>Human Swiss Prot No :</b>	Q9P2W6
<b>Immunogen :</b>	Synthesized peptide derived from human CK021 AA range: 16-66
<b>Specificity :</b>	This antibody detects endogenous levels of CK021 at Human
<b>Formulation :</b>	Liquid in PBS containing 50% glycerol, 0.5% BSA and 0.02% sodium azide.
<b>Source :</b>	Polyclonal, Rabbit,IgG
<b>Dilution :</b>	WB 1:500-2000
<b>Purification :</b>	The antibody was affinity-purified from rabbit antiserum by affinity-chromatography using epitope-specific immunogen.
<b>Concentration :</b>	1 mg/ml
<b>Storage Stability :</b>	-15°C to -25°C/1 year(Do not lower than -25°C)
<b>Molecularweight :</b>	15kD
<b>Function :</b>	tissue specificity:Expressed exclusively in heart.,

<b>Subcellular Location :</b>	Cytoplasm.
<b>Expression :</b>	Expressed exclusively in heart.
<b>Sort :</b>	4021
<b>No4 :</b>	1
<b>Host :</b>	Rabbit
<b>Modifications :</b>	Unmodified

## Products Images



Western blot analysis of lysates from HuvEc cells, primary antibody was diluted at 1:1000, 4° over night