

MTDC rabbit pAb

Catalog No :	YT6697
Reactivity :	Human;Mouse
Applications :	WB;IHC
Target :	MTDC
Fields :	>>One carbon pool by folate;>>Metabolic pathways;>>Biosynthesis of cofactors
Gene Name :	MTHFD2 NMDMC
Protein Name :	MTDC
Human Gene Id :	10797
Human Swiss Prot No :	P13995
Mouse Gene Id :	17768
Mouse Swiss Prot No :	P18155
Immunogen :	Synthesized peptide derived from human MTDC AA range: 121-171
Specificity :	This antibody detects endogenous levels of MTDC at Human/Mouse
Formulation :	Liquid in PBS containing 50% glycerol, 0.5% BSA and 0.02% sodium azide.
Source :	Polyclonal, Rabbit,IgG
Dilution :	WB 1:500-2000;IHC 1:50-300
Purification :	The antibody was affinity-purified from rabbit antiserum by affinity-chromatography using epitope-specific immunogen.
Concentration :	1 mg/ml

Storage Stability : -15 °C to -25 °C/1 year (Do not lower than -25 °C)

Molecularweight : 39kD

Background : This gene encodes a nuclear-encoded mitochondrial bifunctional enzyme with methylenetetrahydrofolate dehydrogenase and methenyltetrahydrofolate cyclohydrolase activities. The enzyme functions as a homodimer and is unique in its absolute requirement for magnesium and inorganic phosphate. Formation of the enzyme-magnesium complex allows binding of NAD. Alternative splicing results in two different transcripts, one protein-coding and the other not protein-coding. This gene has a pseudogene on chromosome 7. [provided by RefSeq, Mar 2009],

Function : catalytic activity:5,10-methenyltetrahydrofolate + H(2)O = 10-formyltetrahydrofolate.,catalytic activity:5,10-methylenetetrahydrofolate + NAD(+) = 5,10-methenyltetrahydrofolate + NADH.,cofactor:Magnesium.,developmental stage:Expressed only in developing normal tissues.,miscellaneous:This NAD-dependent bifunctional enzyme has very different kinetic properties than the larger NADP-dependent trifunctional enzyme and is unique in that it requires formation of an enzyme-magnesium complex to allow binding of NAD.,similarity:Belongs to the tetrahydrofolate dehydrogenase/cyclohydrolase family.,subunit:Homodimer.,

Subcellular Location : Mitochondrion.

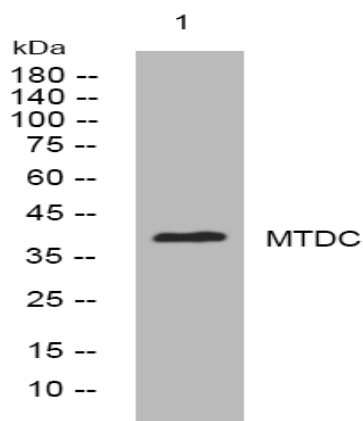
Sort : 10315

No4 : 1

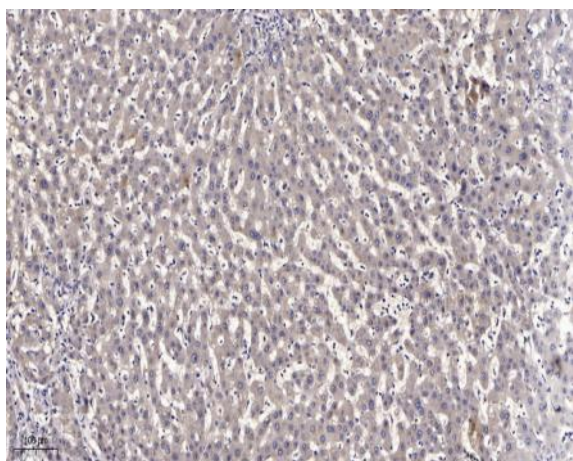
Host : Rabbit

Modifications : Unmodified

Products Images



Western blot analysis of lysates from 293T cells, primary antibody was diluted at 1:1000, 4° over night



Immunohistochemical analysis of paraffin-embedded human liver cancer. 1, Antibody was diluted at 1:200(4° overnight). 2, Tris-EDTA,pH9.0 was used for antigen retrieval. 3,Secondary antibody was diluted at 1:200(room temperature, 45min).