

NAT8L rabbit pAb

Catalog No :	YT6692
Reactivity :	Human;Mouse;Rat
Applications :	WB;ELISA;IHC
Target :	NAT8L
Fields :	>>Alanine, aspartate and glutamate metabolism;>>Metabolic pathways
Gene Name :	NAT8L CML3
Protein Name :	NAT8L
Human Gene Id :	339983
Human Swiss Prot No :	Q8N9F0
Mouse Gene Id :	269642
Mouse Swiss Prot No :	Q3UGX3
Rat Gene Id :	289727
Rat Swiss Prot No :	D3ZVU9
Immunogen :	Synthesized peptide derived from human NAT8L AA range: 218-268
Specificity :	This antibody detects endogenous levels of NAT8L at Human/Mouse/Rat
Formulation :	Liquid in PBS containing 50% glycerol, 0.5% BSA and 0.02% sodium azide.
Source :	Polyclonal, Rabbit,IgG
Dilution :	WB 1:500-2000;IHC 1:50-300; ELISA 2000-20000
Purification :	The antibody was affinity-purified from rabbit antiserum by affinity-

chromatography using epitope-specific immunogen.

Concentration : 1 mg/ml

Storage Stability : -15°C to -25°C/1 year(Do not lower than -25°C)

Molecularweight : 33kD

Background : This gene encodes a single-pass membrane protein, which contains a conserved sequence of the GCN5 or NAT superfamily of N-acetyltransferases and is a member of the N-acyltransferase (NAT) superfamily. This protein is a neuron-specific protein and is the N-acetylaspartate (NAA) biosynthetic enzyme, catalyzing the NAA synthesis from L-aspartate and acetyl-CoA. NAA is a major storage and transport form of acetyl coenzyme A specific to the nervous system. The gene mutation results in primary NAA deficiency (hypoacetylaspartia). [provided by RefSeq, Dec 2010],

Function : similarity:Belongs to the camello family.,similarity:Contains 1 N-acetyltransferase domain.,

Subcellular Location : Cytoplasm . Microsome membrane ; Single-pass membrane protein . Mitochondrion membrane ; Single-pass membrane protein . Endoplasmic reticulum membrane ; Single-pass membrane protein . Its enzymatic activity contribution is quantitatively larger in mitochondrial compartment than in extramitochondrial compartment. .

Expression : Expressed in brain.

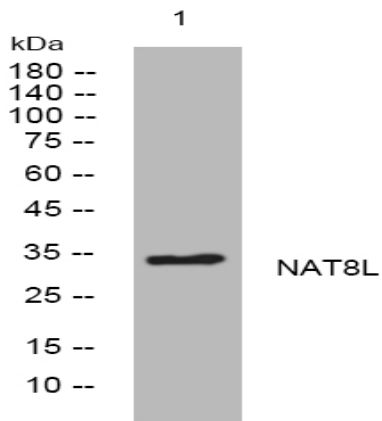
Sort : 10581

No4 : 1

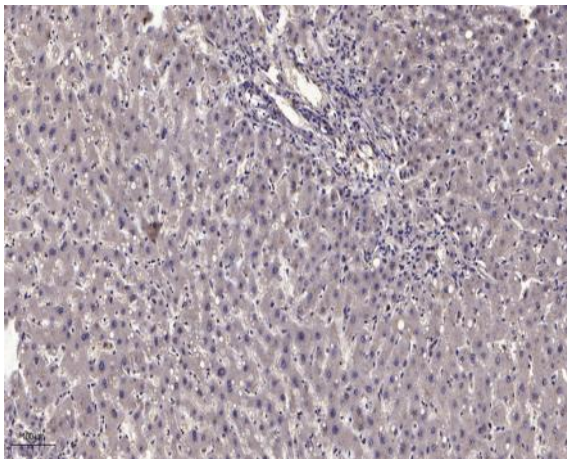
Host : Rabbit

Modifications : Unmodified

Products Images



Western blot analysis of lysates from U2OS cells, primary antibody was diluted at 1:1000, 4° over night



Immunohistochemical analysis of paraffin-embedded human liver cancer. 1, Antibody was diluted at 1:200(4° overnight). 2, Tris-EDTA,pH9.0 was used for antigen retrieval. 3,Secondary antibody was diluted at 1:200(room temperature, 45min).