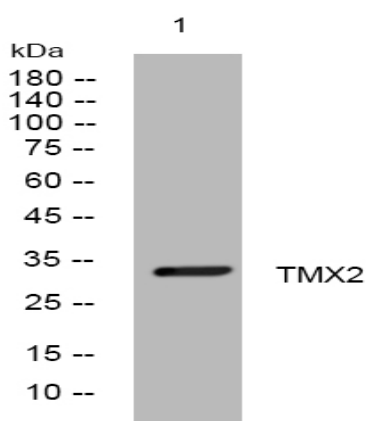


TMX2 rabbit pAb

Catalog No :	YT6690
Reactivity :	Human;Mouse;Rat
Applications :	WB
Target :	TMX2
Gene Name :	TMX2 TXNDC14 CGI-31 My009 PIG26 PSEC0045 UNQ237/PRO270
Protein Name :	TMX2
Human Gene Id :	51075
Human Swiss Prot No :	Q9Y320
Mouse Gene Id :	66958
Mouse Swiss Prot No :	Q9D710
Rat Gene Id :	295701
Rat Swiss Prot No :	Q5XIK2
Immunogen :	Synthesized peptide derived from human TMX2 AA range: 41-91
Specificity :	This antibody detects endogenous levels of TMX2 at Human/Mouse/Rat
Formulation :	Liquid in PBS containing 50% glycerol, 0.5% BSA and 0.02% sodium azide.
Source :	Polyclonal, Rabbit,IgG
Dilution :	WB 1:500-2000
Purification :	The antibody was affinity-purified from rabbit antiserum by affinity-chromatography using epitope-specific immunogen.

Concentration :	1 mg/ml
Storage Stability :	-15°C to -25°C/1 year(Do not lower than -25°C)
Molecularweight :	33kD
Function :	domain:The di-lysine motif confers endoplasmic reticulum localization for type I membrane proteins.,domain:The thioredoxin domain lacks the 2 redox-active cysteines, suggesting that it lacks thioredoxin activity.,similarity:Contains 1 thioredoxin domain.,tissue specificity:Widely expressed.,
Subcellular Location :	Endoplasmic reticulum membrane ; Single-pass type I membrane protein . Mitochondrion membrane . Localizes to endoplasmic reticulum mitochondria-associated membrane (MAMs) that connect the endoplasmic reticulum and the mitochondria. .
Expression :	Widely expressed.
Sort :	17249
No4 :	1
Host :	Rabbit
Modifications :	Unmodified

Products Images



Western blot analysis of lysates from SW480 cells, primary antibody was diluted at 1:1000, 4° over night