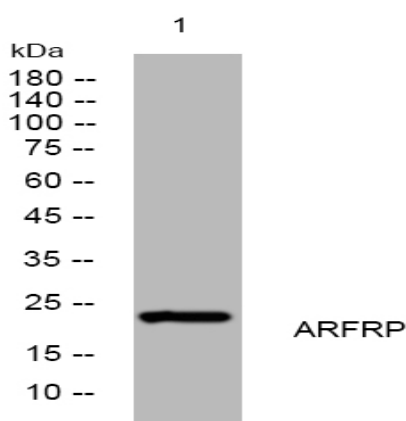


ARFRP rabbit pAb

Catalog No :	YT6688
Reactivity :	Human;Mouse;Rat
Applications :	WB
Target :	ARFRP
Gene Name :	ARFRP1 ARP1
Protein Name :	ARFRP
Human Gene Id :	10139
Human Swiss Prot No :	Q13795
Mouse Gene Id :	76688
Mouse Swiss Prot No :	Q8BXL7
Rat Gene Id :	117051
Rat Swiss Prot No :	Q63055
Immunogen :	Synthesized peptide derived from human ARFRP AA range: 110-160
Specificity :	This antibody detects endogenous levels of ARFRP at Human/Mouse/Rat
Formulation :	Liquid in PBS containing 50% glycerol, 0.5% BSA and 0.02% sodium azide.
Source :	Polyclonal, Rabbit,IgG
Dilution :	WB 1:500-2000
Purification :	The antibody was affinity-purified from rabbit antiserum by affinity-chromatography using epitope-specific immunogen.

Concentration :	1 mg/ml
Storage Stability :	-15°C to -25°C/1 year(Do not lower than -25°C)
Molecularweight :	22kD
Background :	The protein encoded by this gene is a membrane-associated GTP-ase which localizes to the plasma membrane and is related to the ADP-ribosylation factor (ARF) and ARF-like (ARL) proteins. This gene plays a role in membrane trafficking between the trans-Golgi network and endosomes. Alternatively spliced transcript variants encoding different isoforms have been identified. [provided by RefSeq, May 2012],
Function :	function:Possibly involved in plasma membrane-related signaling events.,similarity:Belongs to the small GTPase superfamily. Arf family.,subunit:Interacts with SYS1.,tissue specificity:Found in most tissues.,
Subcellular Location :	Golgi apparatus . Golgi apparatus, trans-Golgi network . Located in the trans-Golgi in the GTP-bound active state. .
Expression :	Found in most tissues.
Sort :	2218
No4 :	1
Host :	Rabbit
Modifications :	Unmodified

Products Images



Western blot analysis of lysates from HeLa cells, primary antibody was diluted at 1:1000, 4° over night