

## SCMC1 rabbit pAb

<b>Catalog No :</b>	YT6684
<b>Reactivity :</b>	Human;Mouse
<b>Applications :</b>	WB;ELISA;IHC
<b>Target :</b>	SCMC1
<b>Gene Name :</b>	SLC25A24 APC1 MCSC1 SCAMC1
<b>Protein Name :</b>	SCMC1
<b>Human Gene Id :</b>	29957
<b>Human Swiss Prot No :</b>	Q6NUK1
<b>Mouse Gene Id :</b>	229731
<b>Mouse Swiss Prot No :</b>	Q8BMD8
<b>Immunogen :</b>	Synthesized peptide derived from human SCMC1 AA range: 162-212
<b>Specificity :</b>	This antibody detects endogenous levels of SCMC1 at Human/Mouse
<b>Formulation :</b>	Liquid in PBS containing 50% glycerol, 0.5% BSA and 0.02% sodium azide.
<b>Source :</b>	Polyclonal, Rabbit,IgG
<b>Dilution :</b>	WB 1:500-2000;IHC 1:50-300; ELISA 2000-20000
<b>Purification :</b>	The antibody was affinity-purified from rabbit antiserum by affinity-chromatography using epitope-specific immunogen.
<b>Concentration :</b>	1 mg/ml
<b>Storage Stability :</b>	-15°C to -25°C/1 year(Do not lower than -25°C)

---

**Molecularweight :** 52kD

---

**Background :** This gene encodes a carrier protein that transports ATP-Mg exchanging it for phosphate. Multiple transcript variants encoding different isoforms have been found for this gene. [provided by RefSeq, May 2012],

---

**Function :** function:Calcium-dependent mitochondrial solute carrier. Mitochondrial solute carriers shuttle metabolites, nucleotides, and cofactors through the mitochondrial inner membrane. May act as a ATP-Mg/Pi exchanger that mediates the transport of Mg-ATP in exchange for phosphate, catalyzing the net uptake or efflux of adenine nucleotides into or from the mitochondria.,similarity:Belongs to the mitochondrial carrier family.,similarity:Contains 3 Solcar repeats.,similarity:Contains 4 EF-hand domains.,tissue specificity:Present in various cell lines (at protein level). Expressed in all tissues tested. Highly expressed in testis, expressed at intermediate level in small intestine and pancreas, and weakly expressed in kidney, spleen, liver, skeletal muscle and heart.,

---

**Subcellular Location :** Mitochondrion inner membrane ; Multi-pass membrane protein .

---

**Expression :** Present in various cell lines (at protein level). Expressed in all tissues tested. Highly expressed in testis, expressed at intermediate level in small intestine and pancreas, and weakly expressed in kidney, spleen, liver, skeletal muscle and heart.

---

**Sort :** 16178

---

**No4 :** 1

---

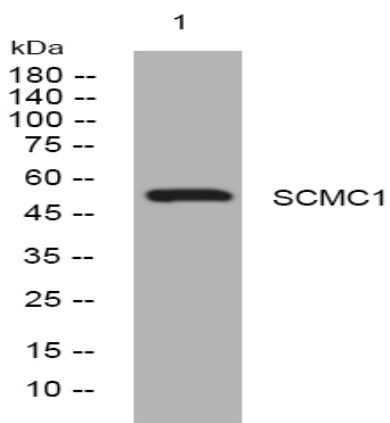
**Host :** Rabbit

---

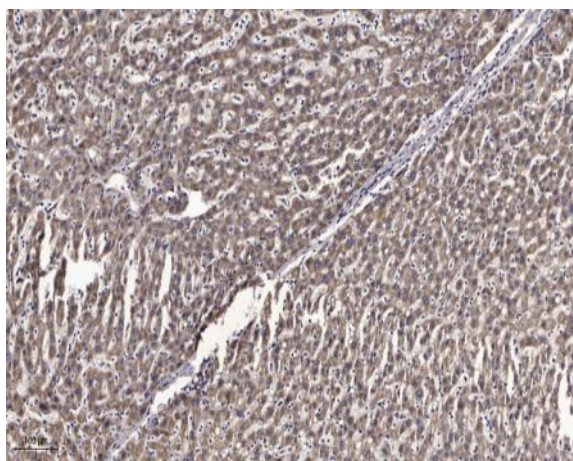
**Modifications :** Unmodified

---

[Products Images](#)



Western blot analysis of lysates from Jurkat cells, primary antibody was diluted at 1:1000, 4° over night



Immunohistochemical analysis of paraffin-embedded human liver cancer. 1, Antibody was diluted at 1:200(4° overnight). 2, Tris-EDTA,pH9.0 was used for antigen retrieval. 3,Secondary antibody was diluted at 1:200(room temperature, 45min).