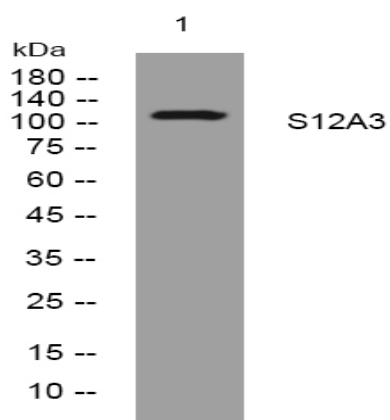


S12A3 rabbit pAb

Catalog No :	YT6683
Reactivity :	Human;Mouse;Rat
Applications :	WB
Target :	S12A3
Gene Name :	SLC12A3 TSC
Protein Name :	S12A3
Human Gene Id :	6559
Human Swiss Prot No :	P55017
Mouse Gene Id :	20497
Mouse Swiss Prot No :	P59158
Rat Gene Id :	54300
Rat Swiss Prot No :	P55018
Immunogen :	Synthesized peptide derived from human S12A3 AA range: 947-997
Specificity :	This antibody detects endogenous levels of S12A3 at Human/Mouse/Rat
Formulation :	Liquid in PBS containing 50% glycerol, 0.5% BSA and 0.02% sodium azide.
Source :	Polyclonal, Rabbit,IgG
Dilution :	WB 1:500-2000
Purification :	The antibody was affinity-purified from rabbit antiserum by affinity-chromatography using epitope-specific immunogen.

Concentration :	1 mg/ml
Storage Stability :	-15°C to -25°C/1 year(Do not lower than -25°C)
Molecularweight :	112kD
Background :	<p>This gene encodes a renal thiazide-sensitive sodium-chloride cotransporter that is important for electrolyte homeostasis. This cotransporter mediates sodium and chloride reabsorption in the distal convoluted tubule. Mutations in this gene cause Gitelman syndrome, a disease similar to Bartter's syndrome, that is characterized by hypokalemic alkalosis combined with hypomagnesemia, low urinary calcium, and increased renin activity associated with normal blood pressure. This cotransporter is the target for thiazide diuretics that are used for treating high blood pressure. Multiple transcript variants encoding different isoforms have been found for this gene. [provided by RefSeq, Jul 2008],</p>
Function :	<p>disease:Defects in SLC12A3 are the cause of Gitelman syndrome (GS) [MIM:263800]. GS is an autosomal recessive disorder characterized by hypokalemic alkalosis in combination with hypomagnesemia, low urinary calcium, and increased renin activity associated with normal blood pressure. Patients are often asymptomatic or present transient periods of muscular weakness and tetany, usually accompanied by abdominal pain, vomiting and fever. The phenotype is highly heterogeneous in terms of age at onset and severity. Cardinal features such as hypocalciuria and hypomagnesemia might also change during the life cycle of a given patient. GS has overlapping features with Bartter syndrome.,function:Electrically silent transporter system. Mediates sodium and chloride reabsorption.,similarity:Belongs to the SLC12A transporter family.,tissue specificity:Predominant in kidney.,</p>
Subcellular Location :	Cell membrane ; Multi-pass membrane protein . Apical cell membrane ; Multi-pass membrane protein .
Expression :	<p>Predominantly expressed in the kidney (at protein level) (PubMed:29993276, PubMed:8812482). Localizes to the distal convoluted tubules (at protein level)(PubMed:29993276). Not detected in normal aorta, but abundantly expressed in fatty streaks and advanced atherosclerotic lesions (at protein level) (PubMed:26099046).</p>
Sort :	14711
No4 :	1
Host :	Rabbit
Modifications :	Unmodified

Products Images



Western blot analysis of lysates from U2OS cells, primary antibody was diluted at 1:1000, 4° over night