

OTOG rabbit pAb

Catalog No :	YT6681
Reactivity :	Human;Mouse
Applications :	IHC;IF
Target :	OTOG
Gene Name :	OTOG OTGN
Protein Name :	OTOG
Human Gene Id :	340990
Human Swiss Prot No :	Q6ZRI0
Mouse Swiss Prot No :	O55225
Immunogen :	Synthesized peptide derived from human OTOG AA range: 2706-2756
Specificity :	This antibody detects endogenous levels of OTOG at Human/Mouse
Formulation :	Liquid in PBS containing 50% glycerol, 0.5% BSA and 0.02% sodium azide.
Source :	Polyclonal, Rabbit,IgG
Dilution :	IHC 1:50-200. IF 1:50-200
Purification :	The antibody was affinity-purified from rabbit antiserum by affinity-chromatography using epitope-specific immunogen.
Concentration :	1 mg/ml
Storage Stability :	-15°C to -25°C/1 year(Do not lower than -25°C)
Molecularweight :	322kD

Background : The protein encoded by this gene is a component of the acellular membranes of the inner ear. Disruption of the orthologous mouse gene shows that it plays a role in auditory and vestibular functions. It is involved in fibrillar network organization, the anchoring of otoconial membranes and cupulae to the neuroepithelia, and likely in sound stimulation resistance. Mutations in this gene cause autosomal recessive nonsyndromic deafness, type 18B. Alternative splicing of this gene results in multiple transcript variants. [provided by RefSeq, May 2014],

Function : function:Glycoprotein specific to acellular membranes of the inner ear. May be required for the anchoring of the otoconial membranes and cupulae to the underlying neuroepithelia in the vestibule. May be involved in the organization and/or stabilization of the fibrillar network that compose the tectorial membrane in the cochlea. May play a role in mechanotransduction processes.,PTM:N-glycosylated (By similarity). Not O-glycosylated.,similarity:Belongs to the otogelin family.,similarity:Contains 1 CTCK (C-terminal cystine knot-like) domain.,similarity:Contains 1 EGF-like domain.,similarity:Contains 1 TIL (trypsin inhibitory-like) domain.,similarity:Contains 4 VWFD domains.,subcellular location:Found in fiber-like structures during the maturation process of the tectorial membrane.,

Subcellular Location : Apical cell membrane ; Peripheral membrane protein ; Extracellular side . Secreted, extracellular space . Found in fiber-like structures during the maturation process of the tectorial membrane. .

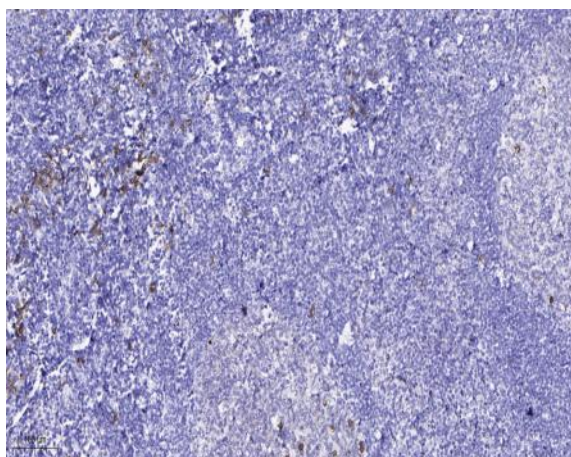
Sort : 11328

No4 : 1

Host : Rabbit

Modifications : Unmodified

Products Images



Immunohistochemical analysis of paraffin-embedded human tonsil. 1, Antibody was diluted at 1:200(4° overnight). 2, Tris-EDTA,pH9.0 was used for antigen retrieval. 3,Secondary antibody was diluted at 1:200(room temperature, 45min).