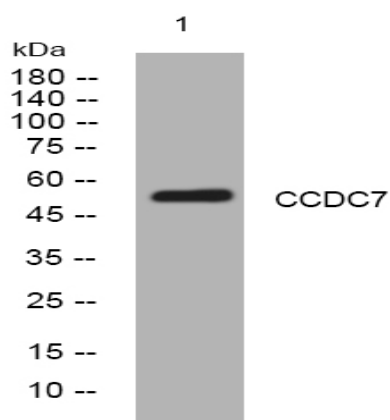


CCDC7 rabbit pAb

Catalog No :	YT6680
Reactivity :	Human;Mouse
Applications :	WB
Target :	CCDC7
Gene Name :	CCDC7 BIOT2
Protein Name :	CCDC7
Human Gene Id :	221016
Human Swiss Prot No :	Q96M83
Mouse Gene Id :	74703
Mouse Swiss Prot No :	Q9D541
Immunogen :	Synthesized peptide derived from human CCDC7 AA range: 380-430
Specificity :	This antibody detects endogenous levels of CCDC7 at Human/Mouse
Formulation :	Liquid in PBS containing 50% glycerol, 0.5% BSA and 0.02% sodium azide.
Source :	Polyclonal, Rabbit,IgG
Dilution :	WB 1[?]500-2000
Purification :	The antibody was affinity-purified from rabbit antiserum by affinity-chromatography using epitope-specific immunogen.
Concentration :	1 mg/ml
Storage Stability :	-15°C to -25°C/1 year(Do not lower than -25°C)

Molecularweight :	53kD
Expression :	Expressed in epithelium of normal cervix and cervical cancer. Overexpressed in early and interim cervical cancer.
Sort :	3319
No4 :	1
Host :	Rabbit
Modifications :	Unmodified

Products Images



Western blot analysis of lysates from HEK293 cells, primary antibody was diluted at 1:1000, 4° over night