

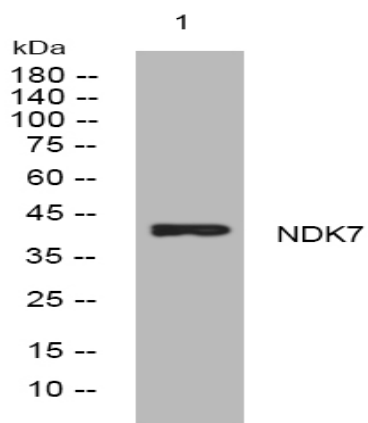
## NDK7 rabbit pAb

<b>Catalog No :</b>	YT6676
<b>Reactivity :</b>	Human;Mouse;Rat
<b>Applications :</b>	WB
<b>Target :</b>	NDK7
<b>Fields :</b>	>>Purine metabolism;>>Pyrimidine metabolism;>>Drug metabolism - other enzymes;>>Metabolic pathways;>>Nucleotide metabolism;>>Biosynthesis of cofactors
<b>Gene Name :</b>	NME7
<b>Protein Name :</b>	NDK7
<b>Human Gene Id :</b>	29922
<b>Human Swiss Prot No :</b>	Q9Y5B8
<b>Mouse Swiss Prot No :</b>	Q9QXL8
<b>Rat Gene Id :</b>	171566
<b>Rat Swiss Prot No :</b>	Q9QXL7
<b>Immunogen :</b>	Synthesized peptide derived from human NDK7 AA range: 152-202
<b>Specificity :</b>	This antibody detects endogenous levels of NDK7 at Human/Mouse/Rat
<b>Formulation :</b>	Liquid in PBS containing 50% glycerol, 0.5% BSA and 0.02% sodium azide.
<b>Source :</b>	Polyclonal, Rabbit,IgG
<b>Dilution :</b>	WB 1[?]500-2000
<b>Purification :</b>	The antibody was affinity-purified from rabbit antiserum by affinity-chromatography using epitope-specific immunogen.

<b>Concentration :</b>	1 mg/ml
<b>Storage Stability :</b>	-15°C to -25°C/1 year(Do not lower than -25°C)
<b>Molecularweight :</b>	41kD
<b>Background :</b>	<p>This gene encodes a member of the non-metastatic expressed family of nucleoside diphosphate kinases. Members of this family are enzymes that catalyzes phosphate transfer from nucleoside triphosphates to nucleoside diphosphates. This protein contains two kinase domains, one of which is involved in autophosphorylation and the other may be inactive. This protein localizes to the centrosome and functions as a component of the gamma-tubulin ring complex which plays a role in microtubule organization. Mutations in this gene may be associated with venous thromboembolism. Alternate splicing results in multiple transcript variants. [provided by RefSeq, Sep 2016],</p>
<b>Function :</b>	<p>catalytic activity:ATP + nucleoside diphosphate = ADP + nucleoside triphosphate.,cofactor:Magnesium.,function:Major role in the synthesis of nucleoside triphosphates other than ATP. The ATP gamma phosphate is transferred to the NDP beta phosphate via a ping-pong mechanism, using a phosphorylated active-site intermediate.,similarity:Belongs to the NDK family.,similarity:Contains 1 DM10 domain.,</p>
<b>Subcellular Location :</b>	centrosome,
<b>Sort :</b>	10627
<b>No4 :</b>	1
<b>Host :</b>	Rabbit
<b>Modifications :</b>	Unmodified

---

## Products Images



Western blot analysis of lysates from HpeG2 cells, primary antibody was diluted at 1:1000, 4° over night