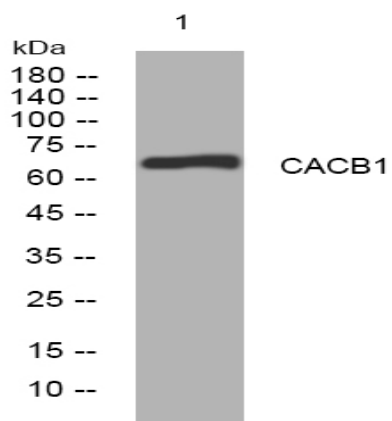


CACB1 rabbit pAb

Catalog No :	YT6675
Reactivity :	Human;Mouse;Rat
Applications :	WB
Target :	CACB1
Fields :	>>MAPK signaling pathway;>>Cardiac muscle contraction;>>Adrenergic signaling in cardiomyocytes;>>Oxytocin signaling pathway;>>Hypertrophic cardiomyopathy;>>Arrhythmogenic right ventricular cardiomyopathy;>>Dilated cardiomyopathy
Gene Name :	CACNB1 CACNLB1
Protein Name :	CACB1
Human Gene Id :	782
Human Swiss Prot No :	Q02641
Mouse Gene Id :	12295
Mouse Swiss Prot No :	Q8R3Z5
Rat Gene Id :	50688
Rat Swiss Prot No :	P54283
Immunogen :	Synthesized peptide derived from human CACB1 AA range: 79-129
Specificity :	This antibody detects endogenous levels of CACB1 at Human/Mouse/Rat
Formulation :	Liquid in PBS containing 50% glycerol, 0.5% BSA and 0.02% sodium azide.
Source :	Polyclonal, Rabbit,IgG
Dilution :	WB 1:500-2000

Purification :	The antibody was affinity-purified from rabbit antiserum by affinity-chromatography using epitope-specific immunogen.
Concentration :	1 mg/ml
Storage Stability :	-15°C to -25°C/1 year(Do not lower than -25°C)
Molecularweight :	66kD
Background :	The protein encoded by this gene belongs to the calcium channel beta subunit family. It plays an important role in the calcium channel by modulating G protein inhibition, increasing peak calcium current, controlling the alpha-1 subunit membrane targeting and shifting the voltage dependence of activation and inactivation. Alternative splicing occurs at this locus and three transcript variants encoding three distinct isoforms have been identified. [provided by RefSeq, Jul 2008],
Function :	function:The beta subunit of voltage-dependent calcium channels contributes to the function of the calcium channel by increasing peak calcium current, shifting the voltage dependencies of activation and inactivation, modulating G protein inhibition and controlling the alpha-1 subunit membrane targeting.,similarity:Belongs to the calcium channel beta subunit family.,similarity:Contains 1 SH3 domain.,subunit:The L-type calcium channel is composed of four subunits: alpha-1, alpha-2, beta and gamma. Interacts with JSRP1.,tissue specificity:Expressed in brain, heart and spleen (isoform 1 and 3) and in skeletal muscle (isoform 2).,
Subcellular Location :	Cell membrane, sarcolemma ; Peripheral membrane protein ; Cytoplasmic side . Cell membrane ; Peripheral membrane protein .
Expression :	Detected in heart ventricle (at protein level) (PubMed:15615847). Isoform 1 and isoform 3 are expressed in brain, heart, spleen, central nervous system and neuroblastoma cells. Isoform 2 is expressed in skeletal muscle.
Sort :	3010
No4 :	1
Host :	Rabbit
Modifications :	Unmodified

Products Images



Western blot analysis of lysates from U2OS cells, primary antibody was diluted at 1:1000, 4° over night