

M4A6A rabbit pAb

Catalog No :	YT6673
Reactivity :	Human
Applications :	WB
Target :	M4A6A
Gene Name :	MS4A6A 4SPAN3 CD20L3 MS4A6 CDA01 MSTP090
Protein Name :	M4A6A
Human Gene Id :	64231
Human Swiss Prot No :	Q9H2W1
Immunogen :	Synthesized peptide derived from human M4A6A AA range: 8-58
Specificity :	This antibody detects endogenous levels of M4A6A at Human
Formulation :	Liquid in PBS containing 50% glycerol, 0.5% BSA and 0.02% sodium azide.
Source :	Polyclonal, Rabbit,IgG
Dilution :	WB 1[?]500-2000
Purification :	The antibody was affinity-purified from rabbit antiserum by affinity-chromatography using epitope-specific immunogen.
Concentration :	1 mg/ml
Storage Stability :	-15°C to -25°C/1 year(Do not lower than -25°C)
Molecularweight :	27kD
Background :	This gene encodes a member of the membrane-spanning 4A gene family. Members of this nascent protein family are characterized by common structural features and similar intron/exon splice boundaries and display unique expression

patterns among hematopoietic cells and nonlymphoid tissues. The gene encoding this protein is localized to 11q12.1, among a cluster of family members. Alternative splicing of this gene results in several transcript variants that encode different protein isoforms. [provided by RefSeq, Oct 2011],

Function :

function:May be involved in signal transduction as a component of a multimeric receptor complex.,similarity:Belongs to the MS4A family.,tissue specificity:Variable expression in some B-cell, myelomonocytic, and erythroleukemia cell lines.,

Subcellular Location :

Membrane; Multi-pass membrane protein.

Expression :

Variable expression in some B-cell, myelomonocytic, and erythroleukemia cell lines.

Sort :

9316

No4 :

1

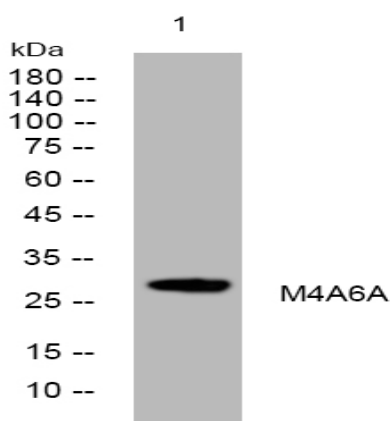
Host :

Rabbit

Modifications :

Unmodified

Products Images



Western blot analysis of lysates from HEK293 cells, primary antibody was diluted at 1:1000, 4° over night