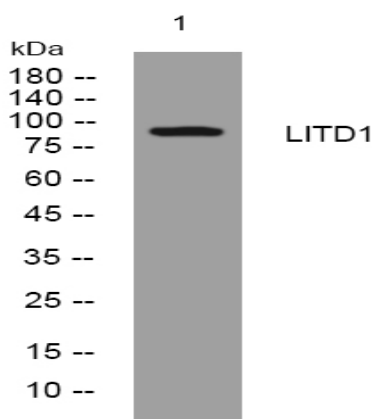


LITD1 rabbit pAb

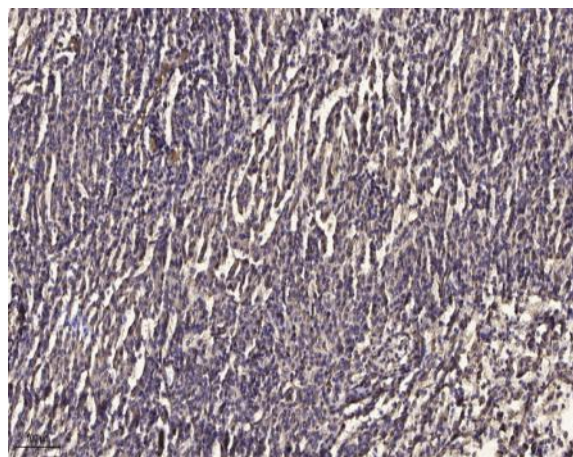
Catalog No :	YT6672
Reactivity :	Human;Mouse
Applications :	WB;IHC
Target :	LITD1
Gene Name :	L1TD1 ECAT11
Protein Name :	LITD1
Human Gene Id :	54596
Human Swiss Prot No :	Q5T7N2
Mouse Gene Id :	381591
Mouse Swiss Prot No :	Q587J6
Immunogen :	Synthesized peptide derived from human LITD1 AA range: 797-847
Specificity :	This antibody detects endogenous levels of LITD1 at Human/Mouse
Formulation :	Liquid in PBS containing 50% glycerol, 0.5% BSA and 0.02% sodium azide.
Source :	Polyclonal, Rabbit,IgG
Dilution :	WB 1:500-2000;IHC 1:50-300
Purification :	The antibody was affinity-purified from rabbit antiserum by affinity-chromatography using epitope-specific immunogen.
Concentration :	1 mg/ml
Storage Stability :	-15°C to -25°C/1 year(Do not lower than -25°C)

Molecularweight : 95kD**Function :** sequence caution:Translated as Leu.,sequence caution:Translation N-terminally extended.,similarity:Belongs to the transposase 22 family.,**Subcellular Location :** intracellular ribonucleoprotein complex,**Sort :** 9208**No4 :** 1**Host :** Rabbit**Modifications :** Unmodified

Products Images



Western blot analysis of lysates from SW480 cells, primary antibody was diluted at 1:1000, 4° over night



Immunohistochemical analysis of paraffin-embedded human meningioma. 1, Antibody was diluted at 1:200(4° overnight). 2, Tris-EDTA,pH9.0 was used for antigen retrieval. 3,Secondary antibody was diluted at 1:200(room temperature, 45min).