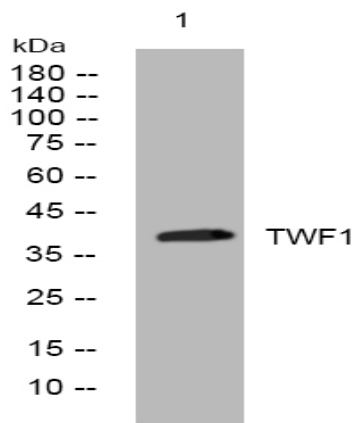


TWF1 rabbit pAb

Catalog No :	YT6671
Reactivity :	Human;Mouse;Rat
Applications :	WB
Target :	TWF1
Gene Name :	TWF1 PTK9
Protein Name :	TWF1
Human Gene Id :	5756
Human Swiss Prot No :	Q12792
Mouse Gene Id :	19230
Mouse Swiss Prot No :	Q91YR1
Rat Gene Id :	315265
Rat Swiss Prot No :	Q5RJR2
Immunogen :	Synthesized peptide derived from human TWF1 AA range: 179-229
Specificity :	This antibody detects endogenous levels of TWF1 at Human/Mouse/Rat
Formulation :	Liquid in PBS containing 50% glycerol, 0.5% BSA and 0.02% sodium azide.
Source :	Polyclonal, Rabbit,IgG
Dilution :	WB 1:500-2000
Purification :	The antibody was affinity-purified from rabbit antiserum by affinity-chromatography using epitope-specific immunogen.

Concentration :	1 mg/ml
Storage Stability :	-15°C to -25°C/1 year(Do not lower than -25°C)
Molecularweight :	39kD
Background :	This gene encodes twinfilin, an actin monomer-binding protein conserved from yeast to mammals. Studies of the mouse counterpart suggest that this protein may be an actin monomer-binding protein, and its localization to cortical G-actin-rich structures may be regulated by the small GTPase RAC1. [provided by RefSeq, Jul 2008],
Function :	caution:Was originally (PubMed:7507208) thought to have protein tyrosine kinase activity.,function:Actin-binding protein involved in motile and morphological processes. Inhibits actin polymerization, likely by sequestering G-actin. By capping the barbed ends of filaments, it also regulates motility. Seems to play an important role in clathrin-mediated endocytosis and distribution of endocytic organelles.,online information:Molecular embrace -Issue 73 of August 2006,PTM:Phosphorylated on serine and threonine residues.,similarity:Belongs to the actin-binding proteins ADF family. Twinfilin subfamily.,similarity:Contains 2 ADF-H domains.,subcellular location:Diffuse cytoplasmic localization with perinuclear and G-actin-rich cortical actin structures sublocalization. Also found at membrane ruffles and cell-cell contacts.,subunit:Interacts with G-actin; ADP-actin form and capping protein (CP).
Subcellular Location :	Cytoplasm. Cytoplasm, cytoskeleton . Diffuse cytoplasmic localization with perinuclear and G-actin-rich cortical actin structures sublocalization. Also found at membrane ruffles and cell-cell contacts (By similarity). .
Expression :	Expressed at high levels in the colon, testis, ovary, prostate and lung. Expressed at lower levels in the brain, bladder and heart. Not detected in liver.
Sort :	23768
No4 :	1
Host :	Rabbit
Modifications :	Unmodified

Products Images



Western blot analysis of lysates from MCF-7 cells, primary antibody was diluted at 1:1000, 4° over night