

LMBRL rabbit pAb

Catalog No :	YT6666
Reactivity :	Human;Mouse
Applications :	WB;IHC
Target :	LMBRL
Gene Name :	LMBR1L KIAA1174 LIMR UNQ458/PRO783
Protein Name :	LMBRL
Human Gene Id :	55716
Human Swiss Prot No :	Q6UX01
Mouse Gene Id :	74775
Mouse Swiss Prot No :	Q9D1E5
Immunogen :	Synthesized peptide derived from human LMBRL AA range: 220-270
Specificity :	This antibody detects endogenous levels of LMBRL at Human/Mouse
Formulation :	Liquid in PBS containing 50% glycerol, 0.5% BSA and 0.02% sodium azide.
Source :	Polyclonal, Rabbit,IgG
Dilution :	WB 1:500-2000;IHC 1:50-300
Purification :	The antibody was affinity-purified from rabbit antiserum by affinity-chromatography using epitope-specific immunogen.
Concentration :	1 mg/ml
Storage Stability :	-15°C to -25°C/1 year(Do not lower than -25°C)

Molecularweight : 54kD

Function : developmental stage:Expressed in fetal kidney and lung.,function:Probable LCN1 receptor. May mediate LCN1 endocytosis.,similarity:Belongs to the LIMR family.,tissue specificity:Expressed in testis, pituitary gland, adrenal gland, trachea, placenta, thymus, cerebellum, stomach, mammary gland, spinal cord. A weaker expression is detected in colon, pancreas, and prostate.,

Subcellular Location : Cell membrane ; Multi-pass membrane protein . Endoplasmic reticulum membrane ; Multi-pass membrane protein .

Expression : Expressed in testis, pituitary gland, adrenal gland, trachea, placenta, thymus, cerebellum, stomach, mammary gland, spinal cord. A weaker expression is detected in colon, pancreas, and prostate.

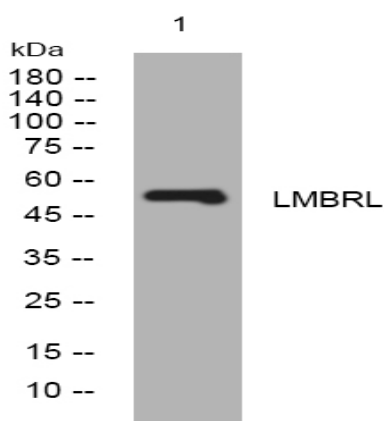
Sort : 9212

No4 : 1

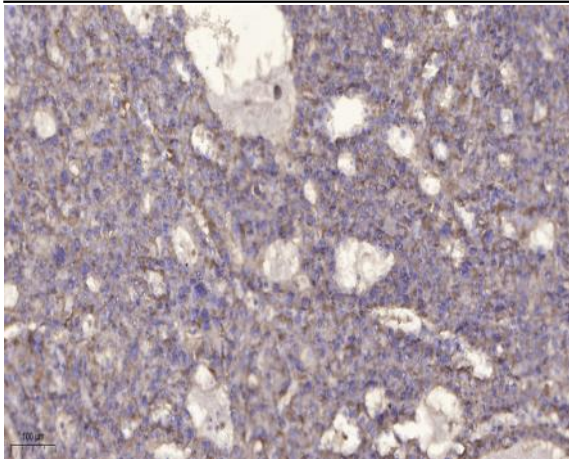
Host : Rabbit

Modifications : Unmodified

Products Images



Western blot analysis of lysates from A549 cells, primary antibody was diluted at 1:1000, 4° over night



Immunohistochemical analysis of paraffin-embedded human liver cancer. 1, Antibody was diluted at 1:200(4° overnight). 2, Tris-EDTA,pH9.0 was used for antigen retrieval. 3,Secondary antibody was diluted at 1:200(room temperature, 45min).