

CRYL1 rabbit pAb

Catalog No :	YT6665
Reactivity :	Human;Mouse;Rat
Applications :	WB
Target :	CRYL1
Fields :	>>Pentose and glucuronate interconversions;>>Metabolic pathways
Gene Name :	CRYL1 CRY
Protein Name :	CRYL1
Human Gene Id :	51084
Human Swiss Prot No :	Q9Y2S2
Mouse Gene Id :	68631
Mouse Swiss Prot No :	Q99KP3
Rat Gene Id :	290277
Rat Swiss Prot No :	Q811X6
Immunogen :	Synthesized peptide derived from human CRYL1 AA range: 50-100
Specificity :	This antibody detects endogenous levels of CRYL1 at Human/Mouse/Rat
Formulation :	Liquid in PBS containing 50% glycerol, 0.5% BSA and 0.02% sodium azide.
Source :	Polyclonal, Rabbit,IgG
Dilution :	WB 1[?]500-2000
Purification :	The antibody was affinity-purified from rabbit antiserum by affinity-

chromatography using epitope-specific immunogen.

Concentration : 1 mg/ml

Storage Stability : -15°C to -25°C/1 year(Do not lower than -25°C)

Molecularweight : 35kD

Background : The uronate cycle functions as an alternative glucose metabolic pathway, accounting for about 5% of daily glucose catabolism. The product of this gene catalyzes the dehydrogenation of L-gulonate into dehydro-L-gulonate in the uronate cycle. The enzyme requires NAD(H) as a coenzyme, and is inhibited by inorganic phosphate. A similar gene in the rabbit is thought to serve a structural role in the lens of the eye. [provided by RefSeq, Jul 2008],

Function : sequence caution:Unknown reasons.,similarity:Belongs to the 3-hydroxyacyl-CoA dehydrogenase family.,tissue specificity:Widely expressed, with highest levels in liver and kidney.,

Subcellular Location : Cytoplasm .

Expression : Widely expressed, with highest levels in liver and kidney.

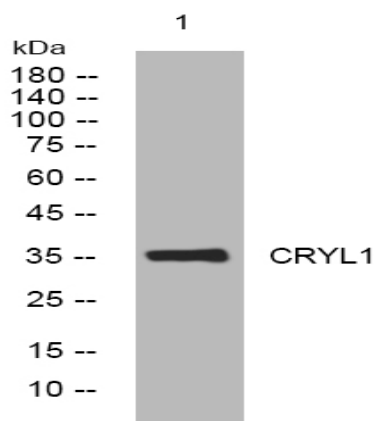
Sort : 4598

No4 : 1

Host : Rabbit

Modifications : Unmodified

Products Images



Western blot analysis of lysates from K562 cells, primary antibody was diluted at 1:1000, 4° over night