

DAZL rabbit pAb

Catalog No :	YT6663
Reactivity :	Human;Mouse
Applications :	WB
Target :	DAZL
Gene Name :	DAZL DAZH DAZL1 DAZLA SPGYLA
Protein Name :	DAZL
Human Gene Id :	1618
Human Swiss Prot No :	Q92904
Mouse Gene Id :	13164
Mouse Swiss Prot No :	Q64368
Immunogen :	Synthesized peptide derived from human DAZL AA range: 202-252
Specificity :	This antibody detects endogenous levels of DAZL at Human/Mouse
Formulation :	Liquid in PBS containing 50% glycerol, 0.5% BSA and 0.02% sodium azide.
Source :	Polyclonal, Rabbit,IgG
Dilution :	WB 1:500-2000
Purification :	The antibody was affinity-purified from rabbit antiserum by affinity-chromatography using epitope-specific immunogen.
Concentration :	1 mg/ml
Storage Stability :	-15°C to -25°C/1 year(Do not lower than -25°C)

Molecularweight : 32kD

Background : The DAZ (Deleted in AZoospermia) gene family encodes potential RNA binding proteins that are expressed in prenatal and postnatal germ cells of males and females. The protein encoded by this gene is localized to the nucleus and cytoplasm of fetal germ cells and to the cytoplasm of developing oocytes. In the testis, this protein is localized to the nucleus of spermatogonia but relocates to the cytoplasm during meiosis where it persists in spermatids and spermatozoa. Transposition and amplification of this autosomal gene during primate evolution gave rise to the DAZ gene cluster on the Y chromosome. Mutations in this gene have been linked to severe spermatogenic failure and infertility in males. Two transcript variants encoding different isoforms have been found for this gene. [provided by RefSeq, Jun 2010],

Function : disease:Defects in DAZL may be a cause of infertility due to severe oligozoospermia (AZ) and non obstructive azoospermia.,domain:The DAZ-like domain mediates the interaction with DAZAP1 and DAZAP2.,function:RNA-binding protein, which is essential for gametogenesis. Plays a central role during spermatogenesis. May act by binding to the 3'-UTR of mRNA and thereby regulating the translation of key transcripts.,similarity:Belongs to the RRM DAZ family.,similarity:Contains 1 DAZ-like domain.,similarity:Contains 1 RRM (RNA recognition motif) domain.,subcellular location:Predominantly cytoplasmic (By similarity). Nuclear in spermatogonia until near the end of the meiotic prophase and cytoplasmic localization from then onward.,subunit:Homodimer and heterodimer (By similarity). Forms a heterodimer with DAZ. Interacts with BOLL, DAZAP1 and DAZAP2. Interacts with PUM2.,tissue specificity:Testis spe

Subcellular Location : Cytoplasm . Nucleus . Predominantly cytoplasmic. Nuclear in spermatogonia until near the end of the meiotic prophase and cytoplasmic localization from then onward. .

Expression : Testis specific.

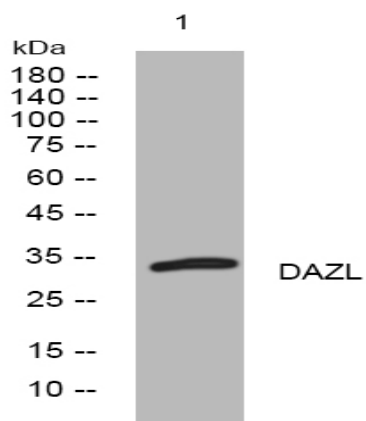
Sort : 5009

No4 : 1

Host : Rabbit

Modifications : Unmodified

Products Images



Western blot analysis of lysates from MDA-MB cells, primary antibody was diluted at 1:1000, 4° over night