

SY14L rabbit pAb

Catalog No :	YT6662
Reactivity :	Human
Applications :	WB;ELISA;IHC
Target :	SY14L
Gene Name :	SYT14L SYTDEP
Protein Name :	SY14L
Human Swiss Prot No :	Q58G82
Immunogen :	Synthesized peptide derived from human SY14L AA range: 85-135
Specificity :	This antibody detects endogenous levels of SY14L at Human
Formulation :	Liquid in PBS containing 50% glycerol, 0.5% BSA and 0.02% sodium azide.
Source :	Polyclonal, Rabbit,IgG
Dilution :	WB 1:500-2000;IHC 1:50-300; ELISA 2000-20000
Purification :	The antibody was affinity-purified from rabbit antiserum by affinity-chromatography using epitope-specific immunogen.
Concentration :	1 mg/ml
Storage Stability :	-15°C to -25°C/1 year(Do not lower than -25°C)
Molecularweight :	21kD
Subcellular Location :	plasma membrane,
Expression :	Expressed in mature peripheral blood neutrophils (at protein level) (PubMed:16376304). Expressed in heart, pancreas, liver and skeletal muscle (PubMed:11543631). Expressed in umbilical vein endothelial cells and

melanocytes (PubMed:23999003).

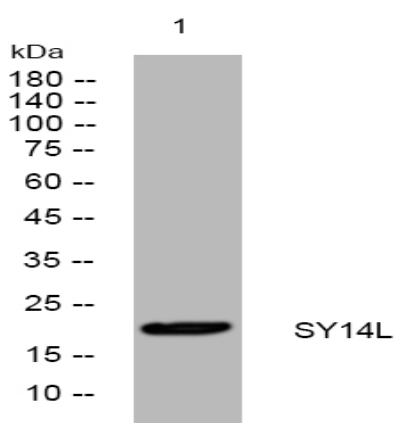
Sort : 16785

No4 : 1

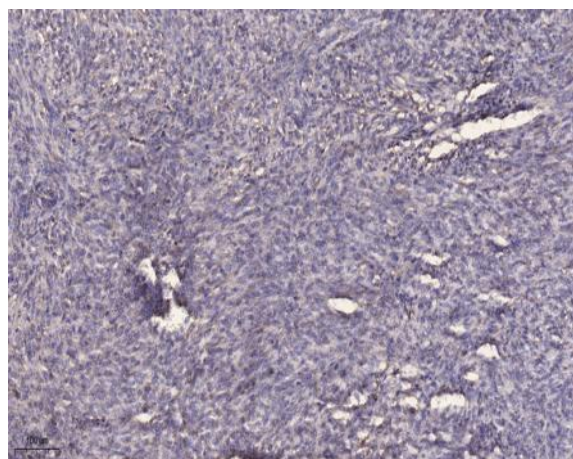
Host : Rabbit

Modifications : Unmodified

Products Images



Western blot analysis of lysates from MCF-7 cells, primary antibody was diluted at 1:1000, 4° over night



Immunohistochemical analysis of paraffin-embedded human Colon cancer. 1, Antibody was diluted at 1:200(4° overnight). 2, Tris-EDTA,pH9.0 was used for antigen retrieval. 3,Secondary antibody was diluted at 1:200(room temperature, 45min).