

ZDHC6 rabbit pAb

Catalog No :	YT6659
Reactivity :	Human;Mouse
Applications :	WB
Target :	ZDHC6
Gene Name :	ZDHHC6 ZNF376
Protein Name :	ZDHC6
Human Gene Id :	64429
Human Swiss Prot No :	Q9H6R6
Mouse Gene Id :	66980
Mouse Swiss Prot No :	Q9CPV7
Immunogen :	Synthesized peptide derived from human ZDHC6 AA range: 160-210
Specificity :	This antibody detects endogenous levels of ZDHC6 at Human/Mouse
Formulation :	Liquid in PBS containing 50% glycerol, 0.5% BSA and 0.02% sodium azide.
Source :	Polyclonal, Rabbit,IgG
Dilution :	WB 1:500-2000
Purification :	The antibody was affinity-purified from rabbit antiserum by affinity-chromatography using epitope-specific immunogen.
Concentration :	1 mg/ml
Storage Stability :	-15°C to -25°C/1 year(Do not lower than -25°C)

Molecularweight : 45kD

Function : catalytic activity:Palmitoyl-CoA + protein-cysteine = S-palmitoyl protein + CoA.,domain:The DHHC domain is required for palmitoyltransferase activity.,similarity:Belongs to the DHHC palmitoyltransferase family.,similarity:Contains 1 DHHC-type zinc finger.,

Subcellular Location : Endoplasmic reticulum membrane ; Multi-pass membrane protein . When not palmitoylated, accumulates to dot-like structures in the endoplasmic reticulum (PubMed:28826475). .

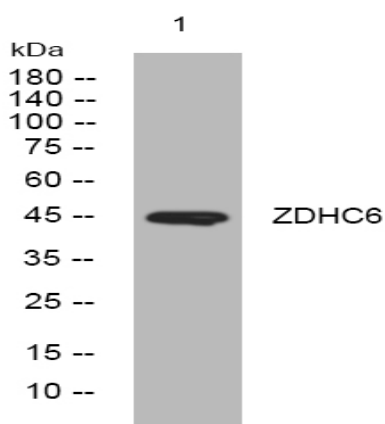
Sort : 24502

No4 : 1

Host : Rabbit

Modifications : Unmodified

Products Images



Western blot analysis of lysates from HuvEc cells, primary antibody was diluted at 1:1000, 4° over night