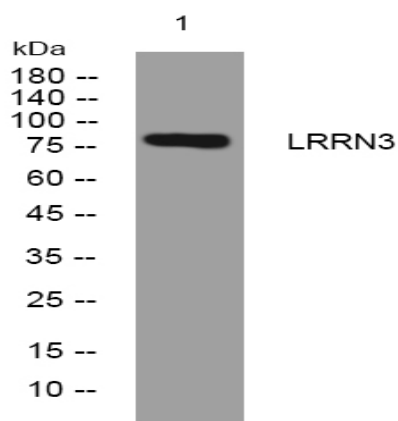


LRRN3 rabbit pAb

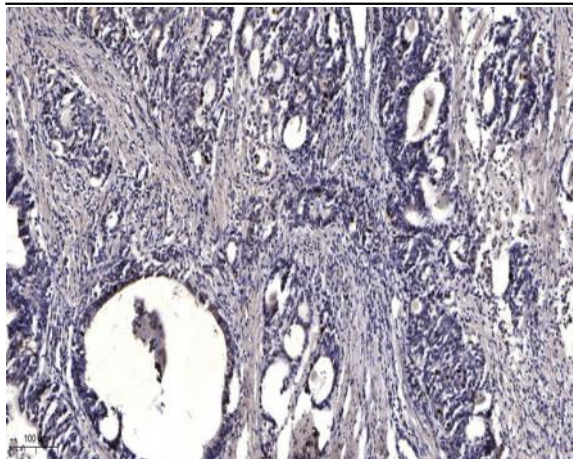
Catalog No :	YT6657
Reactivity :	Human;Mouse;Rat
Applications :	WB;IHC
Target :	LRRN3
Gene Name :	LRRN3 Nbla10363 UNQ194/PRO220
Protein Name :	LRRN3
Human Gene Id :	54674
Human Swiss Prot No :	Q9H3W5
Mouse Gene Id :	16981
Mouse Swiss Prot No :	Q8CBC6
Rat Gene Id :	81514
Rat Swiss Prot No :	Q9ESY6
Immunogen :	Synthesized peptide derived from human LRRN3 AA range: 225-275
Specificity :	This antibody detects endogenous levels of LRRN3 at Human/Mouse/Rat
Formulation :	Liquid in PBS containing 50% glycerol, 0.5% BSA and 0.02% sodium azide.
Source :	Polyclonal, Rabbit,IgG
Dilution :	WB 1:500-2000;IHC 1:50-300
Purification :	The antibody was affinity-purified from rabbit antiserum by affinity-chromatography using epitope-specific immunogen.

Concentration :	1 mg/ml
Storage Stability :	-15°C to -25°C/1 year(Do not lower than -25°C)
Molecularweight :	78kD
Function :	similarity:Contains 1 fibronectin type-III domain.,similarity:Contains 1 Ig-like C2-type (immunoglobulin-like) domain.,similarity:Contains 12 LRR (leucine-rich) repeats.,
Subcellular Location :	Membrane ; Single-pass type I membrane protein .
Sort :	9261
No4 :	1
Host :	Rabbit
Modifications :	Unmodified

Products Images



Western blot analysis of lysates from Jurkat cells, primary antibody was diluted at 1:1000, 4° over night



Immunohistochemical analysis of paraffin-embedded human Gastric adenocarcinoma. 1, Antibody was diluted at 1:200(4° overnight). 2, Tris-EDTA,pH9.0 was used for antigen retrieval. 3,Secondary antibody was diluted at 1:200(room temperature, 45min).