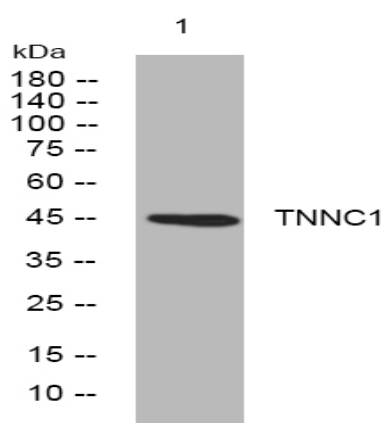


SCRN1 rabbit pAb

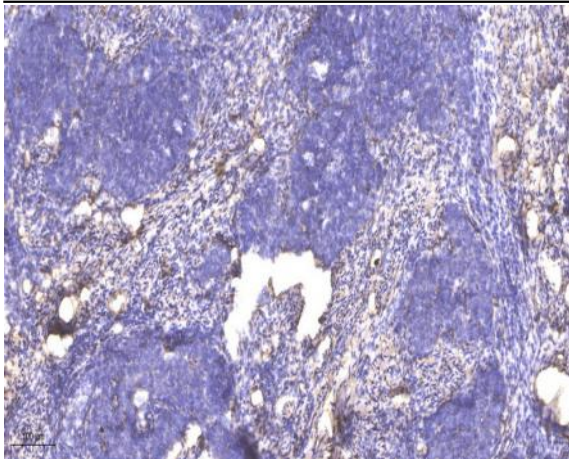
Catalog No :	YT6656
Reactivity :	Human;Mouse;Rat
Applications :	WB;ELISA;IHC
Target :	SCRN1
Gene Name :	SCRN1 KIAA0193
Protein Name :	SCRN1
Human Gene Id :	9805
Human Swiss Prot No :	Q12765
Mouse Gene Id :	69938
Mouse Swiss Prot No :	Q9CZC8
Rat Gene Id :	502776
Rat Swiss Prot No :	Q6AY84
Immunogen :	Synthesized peptide derived from human SCRN1 AA range: 164-214
Specificity :	This antibody detects endogenous levels of SCRN1 at Human/Mouse/Rat
Formulation :	Liquid in PBS containing 50% glycerol, 0.5% BSA and 0.02% sodium azide.
Source :	Polyclonal, Rabbit,IgG
Dilution :	WB 1:500-2000;IHC 1:50-300; ELISA 2000-20000
Purification :	The antibody was affinity-purified from rabbit antiserum by affinity-chromatography using epitope-specific immunogen.

Concentration :	1 mg/ml
Storage Stability :	-15°C to -25°C/1 year(Do not lower than -25°C)
Molecularweight :	46kD
Background :	This gene likely encodes a member of the secernin family of proteins. A similar protein in rat functions in regulation of exocytosis in mast cells. Alternatively spliced transcript variants have been described. [provided by RefSeq, Mar 2009],
Function :	function:Regulates exocytosis in mast cells. Increases both the extent of secretion and the sensitivity of mast cells to stimulation with calcium.,miscellaneous:'Secern' is an archaic English term meaning 'secrete'.,similarity:Belongs to the peptidase C69 family. Secernin subfamily.,
Subcellular Location :	Cytoplasm .
Sort :	16188
No4 :	1
Host :	Rabbit
Modifications :	Unmodified

Products Images



Western blot analysis of lysates from 3T3 cells, primary antibody was diluted at 1:1000, 4° over night



Immunohistochemical analysis of paraffin-embedded human cervical carcinoma. 1, Antibody was diluted at 1:200(4° overnight). 2, Tris-EDTA,pH9.0 was used for antigen retrieval. 3,Secondary antibody was diluted at 1:200(room temperature, 45min).