

TBCD rabbit pAb

Catalog No :	YT6655
Reactivity :	Human;Mouse
Applications :	WB
Target :	TBCD
Gene Name :	TBCD KIAA0988 SSD1 TFCD PP1096
Protein Name :	TBCD
Human Gene Id :	6904
Human Swiss Prot No :	Q9BTW9
Mouse Gene Id :	108903
Mouse Swiss Prot No :	Q8BYA0
Immunogen :	Synthesized peptide derived from human TBCD AA range: 419-469
Specificity :	This antibody detects endogenous levels of TBCD at Human/Mouse
Formulation :	Liquid in PBS containing 50% glycerol, 0.5% BSA and 0.02% sodium azide.
Source :	Polyclonal, Rabbit,IgG
Dilution :	WB 1:500-2000
Purification :	The antibody was affinity-purified from rabbit antiserum by affinity-chromatography using epitope-specific immunogen.
Concentration :	1 mg/ml
Storage Stability :	-15°C to -25°C/1 year(Do not lower than -25°C)

Molecularweight : 131kD

Background : Cofactor D is one of four proteins (cofactors A, D, E, and C) involved in the pathway leading to correctly folded beta-tubulin from folding intermediates. Cofactors A and D are believed to play a role in capturing and stabilizing beta-tubulin intermediates in a quasi-native confirmation. Cofactor E binds to the cofactor D/beta-tubulin complex; interaction with cofactor C then causes the release of beta-tubulin polypeptides that are committed to the native state. [provided by RefSeq, Jul 2008],

Function : function:Tubulin-folding protein; involved in the first step of the tubulin folding pathway. Modulates microtubule dynamics by capturing GTP-bound beta-tubulin (TUBB).,induction:Down-regulated by shear stress.,similarity:Belongs to the TBCD family.,similarity:Contains 3 HEAT repeats.,subunit:Supercomplex made of cofactors A to E. Cofactors A and D function by capturing and stabilizing tubulin in a quasi-native conformation. Cofactor E binds to the cofactor D-tubulin complex; interaction with cofactor C then causes the release of tubulin polypeptides that are committed to the native state.,tissue specificity:Ubiquitously expressed.,

Subcellular Location : Cell junction, tight junction . Lateral cell membrane . Cytoplasm . Cell junction, adherens junction . Cytoplasm, cytoskeleton, microtubule organizing center, centrosome . Localized in cell-cell contacts. .

Expression : Ubiquitously expressed.

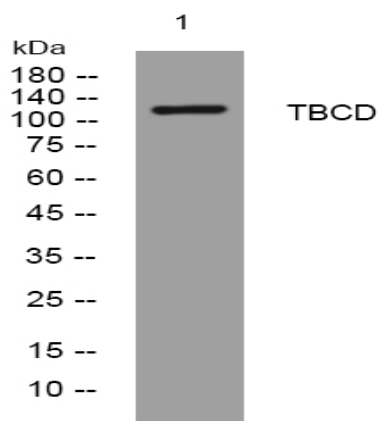
Sort : 16957

No4 : 1

Host : Rabbit

Modifications : Unmodified

Products Images



Western blot analysis of lysates from 293T cells, primary antibody was diluted at 1:1000, 4° over night