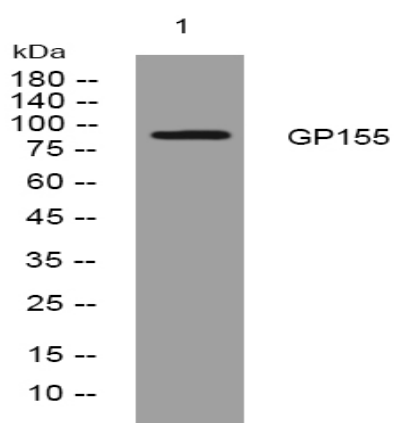


GP155 rabbit pAb

Catalog No :	YT6653
Reactivity :	Human;Mouse
Applications :	WB
Target :	GP155
Gene Name :	GPR155 PGR22
Protein Name :	GP155
Human Gene Id :	151556
Human Swiss Prot No :	Q7Z3F1
Immunogen :	Synthesized peptide derived from human GP155 AA range: 251-301
Specificity :	This antibody detects endogenous levels of GP155 at Human
Formulation :	Liquid in PBS containing 50% glycerol, 0.5% BSA and 0.02% sodium azide.
Source :	Polyclonal, Rabbit,IgG
Dilution :	WB 1:500-2000
Purification :	The antibody was affinity-purified from rabbit antiserum by affinity-chromatography using epitope-specific immunogen.
Concentration :	1 mg/ml
Storage Stability :	-15°C to -25°C/1 year(Do not lower than -25°C)
Molecularweight :	96kD
Function :	similarity:Contains 1 DEP domain.,

Subcellular Location :	Membrane; Multi-pass membrane protein.
Sort :	6964
No4 :	1
Host :	Rabbit
Modifications :	Unmodified

Products Images



Western blot analysis of lysates from A549 cells, primary antibody was diluted at 1:1000, 4° over night