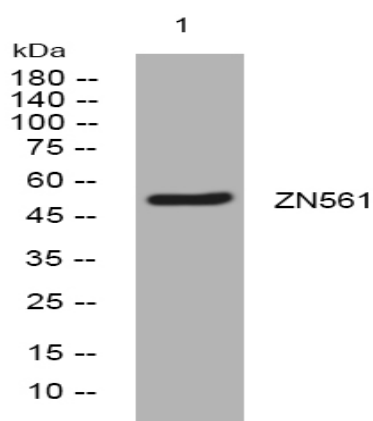


ZN561 rabbit pAb

Catalog No :	YT6652
Reactivity :	Human
Applications :	WB
Target :	ZN561
Fields :	>>Herpes simplex virus 1 infection
Gene Name :	ZNF561
Protein Name :	ZN561
Human Gene Id :	93134
Human Swiss Prot No :	Q8N587
Immunogen :	Synthesized peptide derived from human ZN561 AA range: 387-437
Specificity :	This antibody detects endogenous levels of ZN561 at Human
Formulation :	Liquid in PBS containing 50% glycerol, 0.5% BSA and 0.02% sodium azide.
Source :	Polyclonal, Rabbit,IgG
Dilution :	WB 1[?]500-2000
Purification :	The antibody was affinity-purified from rabbit antiserum by affinity-chromatography using epitope-specific immunogen.
Concentration :	1 mg/ml
Storage Stability :	-15°C to -25°C/1 year(Do not lower than -25°C)
Molecularweight :	53kD

Function :	caution:Could be the product of a pseudogene.,function:May be involved in transcriptional regulation.,sequence caution:Contaminating sequence. Potential poly-A sequence.,similarity:Belongs to the krueppel C2H2-type zinc-finger protein family.,similarity:Contains 1 KRAB domain.,similarity:Contains 10 C2H2-type zinc fingers.,similarity:Contains 12 C2H2-type zinc fingers.,
Subcellular Location :	Nucleus .
Sort :	24642
No4 :	1
Host :	Rabbit
Modifications :	Unmodified

Products Images



Western blot analysis of lysates from 3T3 cells, primary antibody was diluted at 1:1000, 4° over night