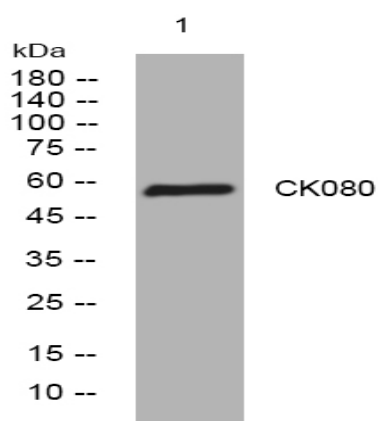


CK080 rabbit pAb

| | |
|-------------------------------|---|
| Catalog No : | YT6650 |
| Reactivity : | Human;Mouse |
| Applications : | WB |
| Target : | CK080 |
| Gene Name : | C11orf80 |
| Protein Name : | CK080 |
| Human Gene Id : | 79703 |
| Human Swiss Prot No : | Q8N6T0 |
| Immunogen : | Synthesized peptide derived from human CK080 AA range: 93-143 |
| Specificity : | This antibody detects endogenous levels of CK080 at Human |
| Formulation : | Liquid in PBS containing 50% glycerol, 0.5% BSA and 0.02% sodium azide. |
| Source : | Polyclonal, Rabbit,IgG |
| Dilution : | WB 1[?]500-2000 |
| Purification : | The antibody was affinity-purified from rabbit antiserum by affinity-chromatography using epitope-specific immunogen. |
| Concentration : | 1 mg/ml |
| Storage Stability : | -15°C to -25°C/1 year(Do not lower than -25°C) |
| Molecularweight : | 57kD |
| Subcellular Location : | Chromosome . Localizes to meiotic chromosomes. . |

| | |
|------------------------|--|
| Expression : | Detected in lung, spleen,colon and in skeletal muscle. Expressed in the ovaries, Fallopian tubes and uterus (PubMed:30388401). |
| Sort : | 4025 |
| No4 : | 1 |
| Host : | Rabbit |
| Modifications : | Unmodified |

Products Images



Western blot analysis of lysates from U2OS cells, primary antibody was diluted at 1:1000, 4° over night