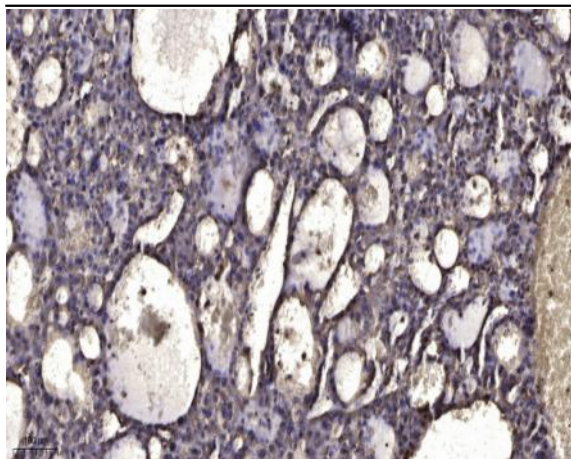


QCR8 rabbit pAb

Catalog No :	YT6649
Reactivity :	Human;Mouse;Rat
Applications :	IHC;IF
Target :	QCR8
Fields :	>>Oxidative phosphorylation;>>Metabolic pathways;>>Cardiac muscle contraction;>>Thermogenesis;>>Non-alcoholic fatty liver disease;>>Alzheimer disease;>>Parkinson disease;>>Amyotrophic lateral sclerosis;>>Huntington disease;>>Prion disease;>>Pathways of neurodegeneration - multiple diseases;>>Chemical carcinogenesis - reactive oxygen species;>>Diabetic cardiomyopathy
Gene Name :	UQCRQ
Protein Name :	QCR8
Human Gene Id :	27089
Human Swiss Prot No :	O14949
Mouse Gene Id :	22272
Mouse Swiss Prot No :	Q9CQ69
Rat Gene Id :	497902
Rat Swiss Prot No :	Q7TQ16
Immunogen :	Synthesized peptide derived from human QCR8 AA range: 2-52
Specificity :	This antibody detects endogenous levels of QCR8 at Human/Mouse/Rat
Formulation :	Liquid in PBS containing 50% glycerol, 0.5% BSA and 0.02% sodium azide.
Source :	Polyclonal, Rabbit,IgG

Dilution :	IHC 1:50-200. IF 1:50-200
Purification :	The antibody was affinity-purified from rabbit antiserum by affinity-chromatography using epitope-specific immunogen.
Concentration :	1 mg/ml
Storage Stability :	-15°C to -25°C/1 year(Do not lower than -25°C)
Molecularweight :	9kD
Background :	This gene encodes a ubiquinone-binding protein of low molecular mass. This protein is a small core-associated protein and a subunit of ubiquinol-cytochrome c reductase complex III, which is part of the mitochondrial respiratory chain. [provided by RefSeq, Jul 2008],
Function :	disease:Defects in UQCRQ are a cause of mitochondrial complex III deficiency (CIII deficiency) [MIM:124000]. Affected individuals display severe psychomotor retardation and extrapyramidal signs. Neurologic features include dystonia, athetoid movements, ataxia, mild axial hypotonia, increased tone, hyperreflexia, and inability to walk unsupported. Serum lactate is mildly elevated and muscle biopsies show a reduction in mitochondrial complex III activity.,function:This is a component of the ubiquinol-cytochrome c reductase complex (complex III or cytochrome b-c1 complex), which is part of the mitochondrial respiratory chain. This subunit, together with cytochrome b, binds to ubiquinone.,similarity:Belongs to the UQCRQ/QCR8 family.,subunit:The bc1 complex contains 11 subunits: 3 respiratory subunits (cytochrome b, cytochrome c1 and Rieske/UQCRFS1), 2 core proteins (UQCRC1/QCR1 and UQCRC2/QC
Subcellular Location :	Mitochondrion inner membrane ; Single-pass membrane protein .
Sort :	13199
No4 :	1
Host :	Rabbit
Modifications :	Unmodified

Products Images



Immunohistochemical analysis of paraffin-embedded human liver cancer. 1, Antibody was diluted at 1:200(4° overnight). 2, Tris-EDTA,pH9.0 was used for antigen retrieval. 3,Secondary antibody was diluted at 1:200(room temperature, 45min).