

## ZN165 rabbit pAb

<b>Catalog No :</b>	YT6647
<b>Reactivity :</b>	Human
<b>Applications :</b>	WB
<b>Target :</b>	ZN165
<b>Gene Name :</b>	ZNF165 ZPF165 ZSCAN7
<b>Protein Name :</b>	ZN165
<b>Human Gene Id :</b>	7718
<b>Human Swiss Prot No :</b>	P49910
<b>Immunogen :</b>	Synthesized peptide derived from human ZN165 AA range: 200-250
<b>Specificity :</b>	This antibody detects endogenous levels of ZN165 at Human
<b>Formulation :</b>	Liquid in PBS containing 50% glycerol, 0.5% BSA and 0.02% sodium azide.
<b>Source :</b>	Polyclonal, Rabbit,IgG
<b>Dilution :</b>	WB 1[?]500-2000
<b>Purification :</b>	The antibody was affinity-purified from rabbit antiserum by affinity-chromatography using epitope-specific immunogen.
<b>Concentration :</b>	1 mg/ml
<b>Storage Stability :</b>	-15°C to -25°C/1 year(Do not lower than -25°C)
<b>Molecularweight :</b>	53kD
<b>Background :</b>	This gene encodes a member of the Kruppel family of zinc finger proteins. Members of this DNA-binding protein family act as transcriptional regulators. This gene is located within a cluster of zinc finger family members. The encoded

protein may play a role in spermatogenesis. [provided by RefSeq, Jul 2008],

**Function :** function:May be involved in transcriptional regulation.,similarity:Belongs to the krueppel C2H2-type zinc-finger protein family.,similarity:Contains 1 SCAN box domain.,similarity:Contains 6 C2H2-type zinc fingers.,tissue specificity:Expressed specifically in testis.,

**Subcellular Location :** Nucleus .

**Expression :** Expressed specifically in testis.

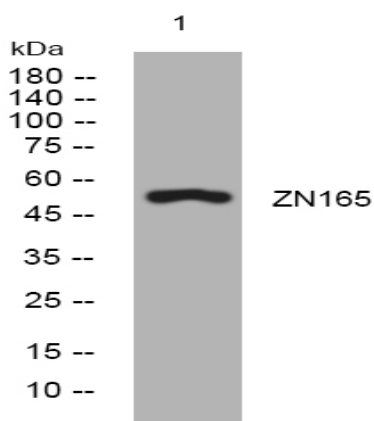
**Sort :** 24567

**No4 :** 1

**Host :** Rabbit

**Modifications :** Unmodified

## Products Images



Western blot analysis of lysates from SW480 cells, primary antibody was diluted at 1:1000, 4° over night